

Wabi Sabi 2.0

Crack - Carpet Tiles



WELSPUN
FLOORING

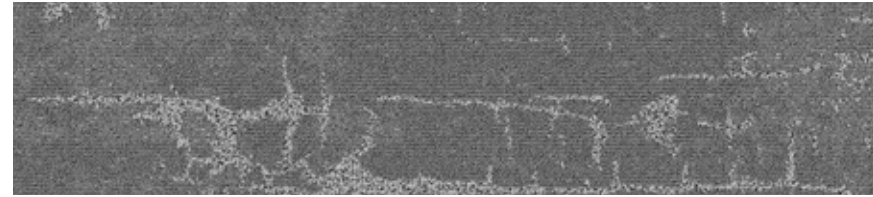
Crack

Inspired by an age old art form dating back to the 15th century, the Crack Collection draws its attributes from Kintsugi, the Japanese art of repairing broken pottery by mending the areas of breakage with lacquer, dusted or mixed with powdered gold, silver, or platinum.

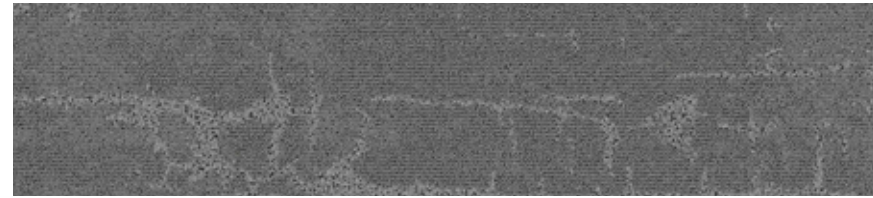
The intention is to embrace the imperfections as a part of the history of an object, rather than something to disguise.



Design Name : Crack



STORM | AC: CT001041



PLATINUM | AC: CT001040



RHINO | AC: CT001039



ROYAL BLUE | AC: CT001054

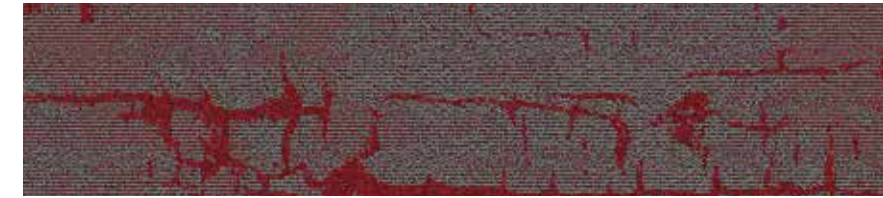


LIME | AC: CT001048

Design Name : Crack



MARIGOLD | AC: CT001050



CAYENNE | AC: CT001044



MERLOT | AC: CT001052

PRODUCT SPECIFICATIONS

| | |
|---------------------|--------------------|
| Yarn | Nylon |
| Machine / Gauge | 1/10 Loop Infinity |
| Tufted Weight(Oz) | 20 |
| Density | Min. 6000 |
| Total Thickness(mm) | 4 to 5 |
| Pile Thickness(mm) | Upto 4 |
| Backing Type | PVC |
| SPI | 12 |
| Size(cm) | Plank (25X100) |

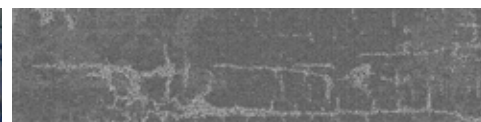


www.welspunflooring.com

COLORWAYS



ROYAL BLUE | AC: CT001054



STORM | AC: CT001041



PLATINUM | AC: CT001040



www.welspunflooring.com

COLORWAYS



MARIGOLD | AC: CT001050



STORM | AC: CT001041



PLATINUM | AC: CT001040



COLORWAYS



LIME | AC: CT001048



STORM | AC: CT001041



PLATINUM | AC: CT001040

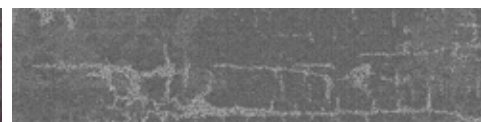


www.welspunflooring.com

COLORWAYS



MERLOT | AC: CT001052



STORM | AC: CT001041



PLATINUM | AC: CT001040

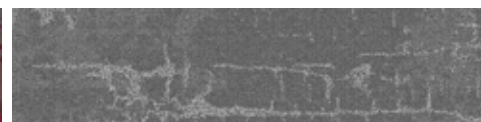


www.welspunflooring.com

COLORWAYS



CAYENNE | AC: CT001044

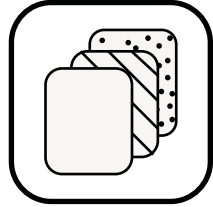


STORM | AC: CT001041

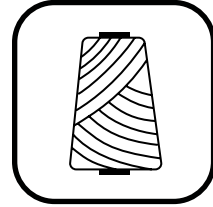


PLATINUM | AC: CT001040

WELSPUN CARPET TILES ADVANTAGES



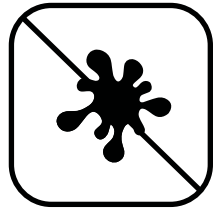
Multiple Design Possibilities



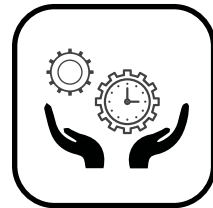
Solution Dyed Tufted Product



Ideal For Heavy Foot Traffic



Stain Protect



Easy To Maintain



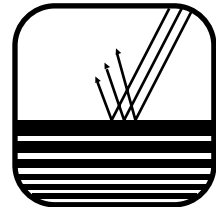
Easy To Install



Offers Sound Insulation



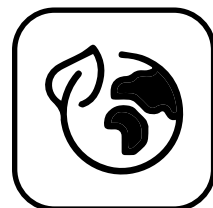
Reduces Wastage During Installation



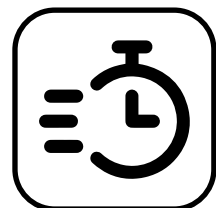
Fade Resistant



Made in India

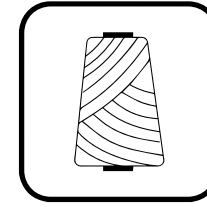


40% Less Environmental Footprint



Less Lead Time

TRADEMARKS & TECHNOLOGIES



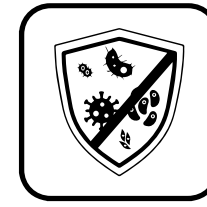
NY6+™

For colors those don't fade out, Welspun Floorings Ny6+™ is made up of a highly resilient fiber that is known for its superior color retention, strength, stain and fade resistance. With all this, your floor always retains its beauty come what may.



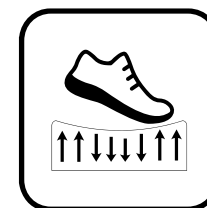
Welspun Ecolite™

Welspun Ecolite™ backing is made up of lightweight PVC that not only reduces the overall weight significantly but ensures a 40% less environment footprint than traditional carpets. Despite that, this backing retains the highest performance standards.



Now also available with **HealthyFloor™** (Optional)

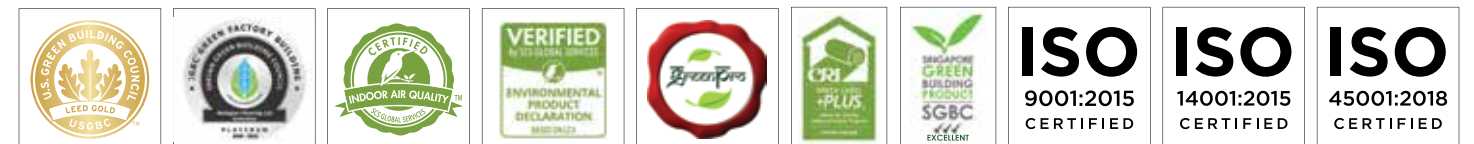
We also have carpet tiles options with **antiviral property**. Tested and certified by Reslnnova labs, we are India's first antiviral carpet tiles. It kills 99.68 % human corona virus because of a special coating of silver iron and titanium oxide. We make healthy floors.



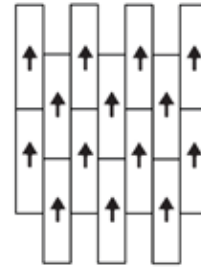
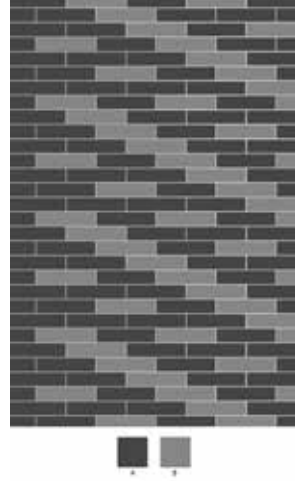
Comfortile™ (Optional)

With Comfortile™ backing, our tiles come with a customized felt-back that not only offers great underfoot comfort but also sound absorption. Comfortile™ provides extra levels of protection and support for high levels of acoustic and ergonomic support.

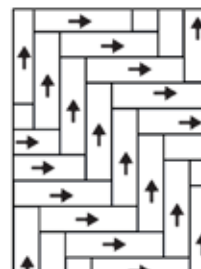
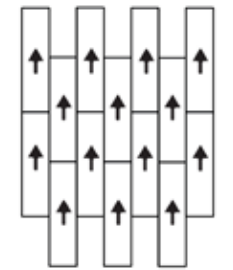
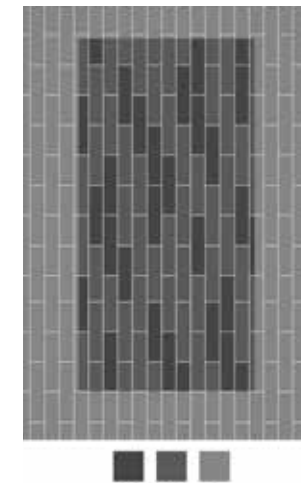
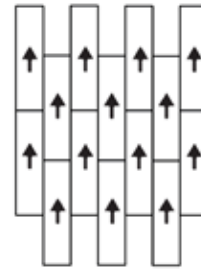
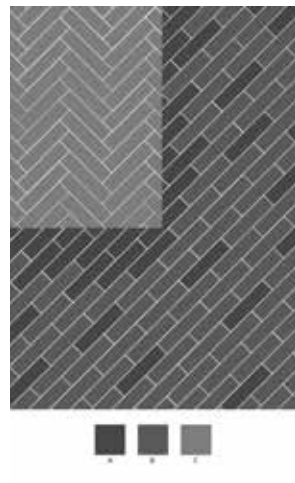
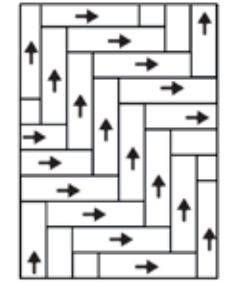
CERTIFICATIONS



LAYOUT PATTERNS



LAYOUT PATTERNS



TEST REPORT SUMMARY

| Test Name | Method | Test Name | Method |
|-----------------------------------|---------------------------|--|------------------------|
| Anti Microbial Treatment | AATCC 174 (Part II & III) | Colour fastness to bleach | AATCC 6 |
| Delamination | ASTM D 3936 | Static Electricity | AATCC 134-1996 |
| Tuft Bind | ASTM 1335-67 | Anti Static | ANSI/ESD S 71 |
| Dimensional stability | ASTM D7570 | Castor Chair | DIN 54324 |
| Pile weight | ASTM D5848-07 | Hexapod | ASTM D 5252-15 |
| Pile density | ASTM D5848-07 | Static Coefficient | ASTM C1028 |
| Total thickness | ASTM D6988-08 | Dimensional stability (Aachen test) | DIN-STD-54318/ITTS-004 |
| Pile height | ASTM D5823-05a | Anti Soil | ASTM D6540-05 |
| Gauge | ASTM D5793 - 13 | Shampoo Fastness | AATCC 138 |
| Tuft density | ASTM D5848 | Water Fastness | AATCC 107 |
| Flammability (Pill Test) | ASTM D2859 | Velcro-Loops | ITTS 112 |
| "Flammability (Radiant Panel)" | ASTM E 648-06 | Heavy Traffic t test (Walk test) | ASTM6119-03 |
| NBS Smoke Density (Flaming) | ASTM E 662-06 | Sound transmission | ASTMC423-17 |
| Lightfastness | AATCC 16 E | Sound Absorption | ASTMC423-17 |
| Colour fastness to Ozone | AATCC 129 | Static Loading | ISO 015/3415 |
| Colour fastness to NO2 | AATCC 164-2008 | Green Carpet (VOC) | ASTM D5116 |
| Crocking Dry and Wet | AATCC 165-2008 | Acoustic- Nylon | BS EN ISO 354 |
| Stain fastness | AATCC 175-2008/ITTS 002 | Thermal Resistance | ASTM C 518 |



WELSPUN

FLOORING

To transform your flooring, just get in touch with us:

Address:

Welspun Global Brands Ltd,
Survey No 190, Chandanvelly, Near Hythabad, Shabad Mandal,
Ranga Reddy District, Telangana 501503, India

Contact us:

☎ 1800 120 1161

✉ contact_flooring@welspun.com

www.welspunflooring.com