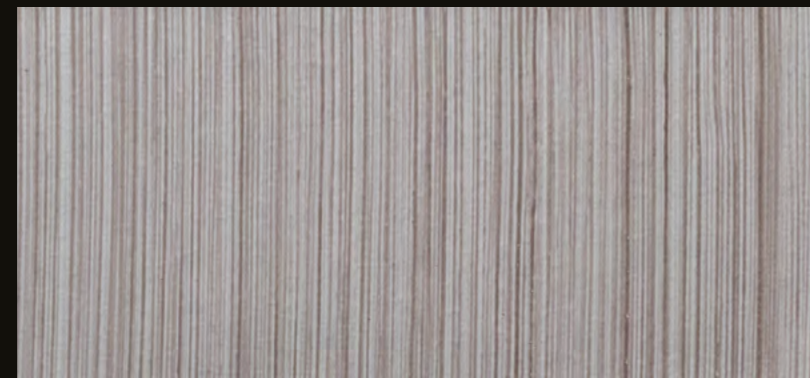


VELUTTO®
TACTILE FEEL



1500/61 - Rayon Base 1500/61
Leather Effect



1500/61 - Rayon Base 1500/61
Denim Vertical Fabric Effect



1500/61 - Rayon Base 1500/61
Denim Textile Effect

Velutto®

Velutto® is an interior decorative paint characterized by its tactile feel reminiscent of soft, pliable leather that can be used to achieve a variety of textile effects.

Technical Name
Tactile feel.

Key Properties

- Unleaded
- Water based
- Washable (after full curing)
- Odorless
- 1 attractive base color (1500)
- Very low VOC content in compliance with:
 - EU directive 2010/79/EU
 - French decree No: 2011-321

Pack Size

- 1 US Quart - (0.75 kg)
- 1 US Gallon - (3 kg)

Recommended Uses

Internal applications.

Type of Substrate

Plaster, embossed wall coverings, gypsum board, concrete, brick work & block work.

Finish

Flat finish.

Coverage

3-4 m² per kg.

Drying Time

20 minutes to 1 hour depending on temperature and humidity.

Thinner

No thinning required.

Preparation

All surfaces to be painted should be clean, dry and free from loose & flaking material. Rub down & rinse. Prime the substrate with the appropriate COLORTEK® CO. ACRYL or C1 Family.

Instructions

Leather Effect: Apply Velutto® using brush in small crisscross pattern strokes while moving in all directions. Go over the surface with a brush free of product, this time with longer strokes in all directions to blend the texture. Once fully dried repeat the same procedure. After the second coat has dried, sand the surface with an Abralon 1000 or a normal 2000 grit sanding paper and clean the surface with a damp sponge.

Denim Vertical Fabric Effect: With mohair roller and dragging brush spread Velutto® in strips. Immediately afterwards, while the product is still wet, brush

CODING SYSTEM

Color reference / Color name
1500/61 - Rayon Base 1500/61
Background color /



Velutto® from top to bottom and vice versa with a dragging brush #189 to recreate a vertical lined fabric effect. Once fully dried repeat the same procedure. After the second coat has dried, sand the surface with an Abralon 1000 or a normal 2000 grit sanding paper and clean the surface with a damp sponge.

Denim Textile Effect: With a mohair roller and dragging brush spread Velutto® in strips. Immediately afterwards, while the product is still wet, brush Velutto® from top to bottom and vice versa with a dragging brush #189 to recreate a vertical lined fabric effect. Once the first coat has dried, apply a second coat, this time with a horizontal direction. Once the second coat has dried, sand the surface with an Abralon 1000 or a normal 2000 grit sanding paper and clean the surface with a damp sponge.

Do not apply at temperatures below 5° C or when rain is expected.

Cleaning

Remove as much product as possible from application equipment before cleaning. Clean equipment immediately after use with warm soapy water & rinse thoroughly.

Do not empty product into drains or watercourses.

Additional Info

Product batches are tested using a quality control system and are ISO 9001:2008 certified

Transportation & Storage

Care should be taken to avoid spillage. Protect from frost & humidity.

Velutto®

Velutto® est une peinture décorative se caractérisant par un fini tactile doux et souple au toucher permettant d'obtenir une multitude d'effets textiles réalistes.

Nom Technique

Effet tactile.

Propriétés

- Ne contient pas de plomb
- Produit en base eau
- Lavable
- 1 base (1500)
- Faible teneur en COV conformément aux:
 - Directive EU directive 2010/79/EU
 - Decret Français No: 2011-321

Emballage

- 1 US Quart - (0.75 kg)
- 1 US Gallon - (3 kg)

Usage Recommandé

Application en intérieur.

Types de Support

Enduit, ciment, plaque de plâtre, anciennes peintures usuelles absorbantes, etc.



SYSTÈME DE CODAGE

Référence couleur / Nom de la couleur
1500/61 - Rayon Base 1500/61
Couleur de fond /

Finition

Finition matte.

Rendement

3-4 m² par kg.

Temps de Séchage

Environ 20 à 60 minutes en fonction des conditions climatiques et de la température ambiante.

Diluant

Aucune dilution requise.

Préparation du Support

Le support doit être dur, propre, sain, sec, cohésif et libre de toute matière telle que salpêtre, mousse, lichen ou autres microorganismes pouvant empêcher l'adhérence du produit sur le support. Dans un premier temps, appliquer la couleur appropriée de la sous-couche COLORTEK® CO.ACRYL ou Famille C1.

Application

Effet cuir: Appliquez Velutto® à l'aide d'une brosse en suivant un mouvement croisé. Repasser une brosse sans produit sur la surface en élargissant la distance du mouvement afin d'amalgamer la texture. Laissez le produit sécher et appliquez une seconde couche en suivant la même procédure. Une fois la seconde couche ayant séchée, poncez la surface à l'aide d'une ponceuse type Abralon équipée d'un un abrasif 1000 ou 2000 et dépoussiérez la surface.

Effet Denim Vertical: Appliquez Velutto® à l'aide d'un rouleau mohair. Immédiatement repasser la surface du haut vers le bas à l'aide de la brosse #189 afin de recréer les lignes verticales du textile. Laissez le produit sécher et appliquez une seconde couche en suivant la même procédure. Une fois la seconde couche ayant séchée, poncez la surface à l'aide d'une ponceuse type Abralon équipée d'un un abrasif 1000 ou 2000 et dépoussiérez la surface.

Effet Textile Denim: Appliquez Velutto® à l'aide d'un rouleau mohair. Immédiatement repasser la surface du haut vers le bas à l'aide de la brosse #189 afin de recréer les lignes verticales du textile denim. Laissez le produit sécher et appliquez une seconde couche, cette fois-ci en mouvement horizontal. Une fois la seconde couche ayant séchée, poncez la surface à l'aide d'une ponceuse type Abralon équipée d'un un abrasif 1000 ou 2000 et dépoussiérez la surface.

Ne pas appliquer à une température ambiante inférieure à 5°C ou par temps pluvieux.

Nettoyage des Outils

Éliminer autant que possible le reste du produit de la surface des outils. Nettoyer ces derniers en les frottant vigoureusement avec de l'eau et du savon.

Ne pas vider les restes du produit dans égouts ou les voies d'eau.

Information Additionnelle

Le processus de fabrication de Velutto® est soumis au plus stricts contrôles de qualité certifiés conformes au standard ISO 9001:2008.

Transport et Stockage

Stocker le produit à l'abri de l'humidité et des températures de gel.



COLORTEK®

COLORTEK®
Product designed in the EU



www.colortek.eu
info@colortek.eu

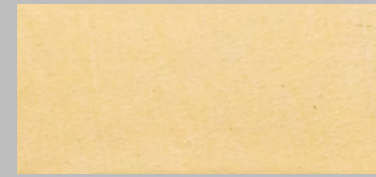


Synergy, Added Value, Continuous Improvement,
Diversity, Integrity, Social Responsibility.

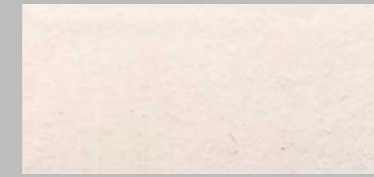




1500/01 - Canvas Base White



1500/06 - Tweed Base 1500/06



1500/11 - Velvet Base 1500/11



1500/16 - Silk Base 1500/16



1500/21 - Coir Base 1500/21



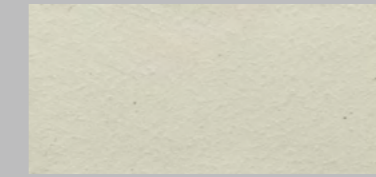
1500/26 - Jute Base 1500/26



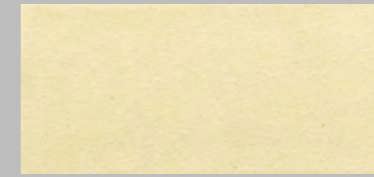
1500/31 - Textile Base 1500/31



1500/36 - Organza Base 1500/36



1500/41 - Piqué Base 1500/41



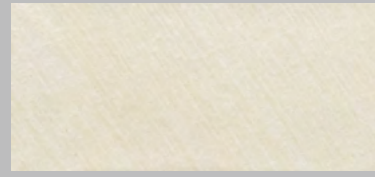
1500/46 - Wool Base 1500/46



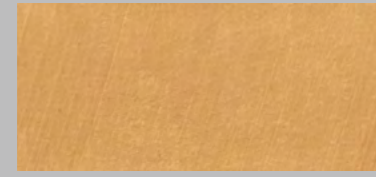
1500/51 - Mouflon Base 1500/51



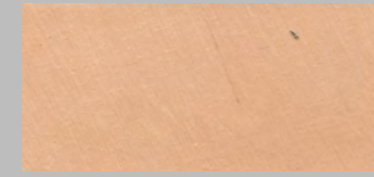
1500/56 - Chino Base 1500/56



1500/02 - Chiffon Base White



1500/07 - Foulard Base 1500/07



1500/12 - Lycra Base 1500/12



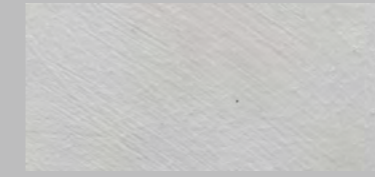
1500/17 - Felt Base 1500/17



1500/22 - Linen Base 1500/22



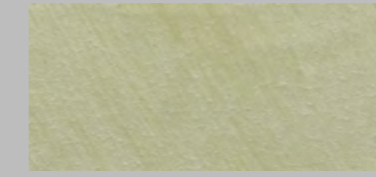
1500/27 - Fabric Base 1500/27



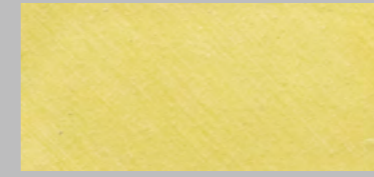
1500/32 - Cotton Base 1500/32



1500/37 - Twill Base 1500/37



1500/42 - Fleece Base 1500/42



1500/47 - Tull Base 1500/47



1500/52 - Rinzu Base 1500/52



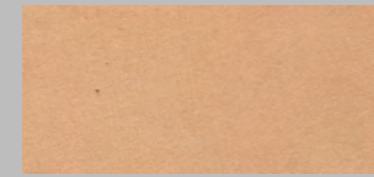
1500/57 - Moire Base 1500/57



1500/03 - Bamboo Base White



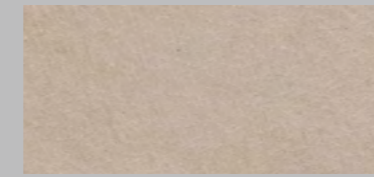
1500/08 - Net Base 1500/08



1500/13 - Chenille Base 1500/13



1500/18 - Hodden Base 1500/18



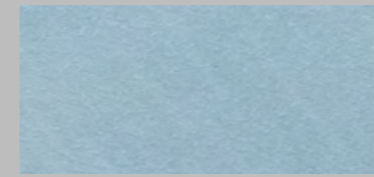
1500/23 - Velour Base 1500/23



1500/28 - Lace Base 1500/28



1500/33 - Fiber Base 1500/33



1500/38 - Tartan Base 1500/38



1500/43 - Faille Base 1500/43



1500/48 - Crochet Base 1500/48



1500/53 - Plissé Base 1500/53



1500/58 - Vintage Base 1500/58



1500/04 - Muslin Base 1500/04



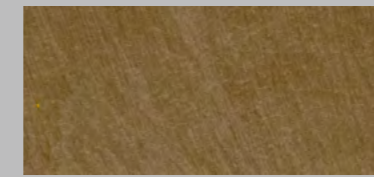
1500/09 - Crêpe Base 1500/09



1500/14 - Mesh Base 1500/14



1500/19 - Dazzle Base 1500/19



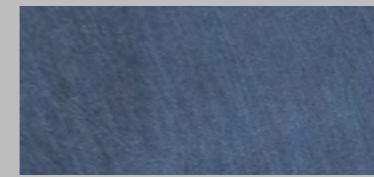
1500/24 - Leather Base 1500/24



1500/29 - Leno Base 1500/29



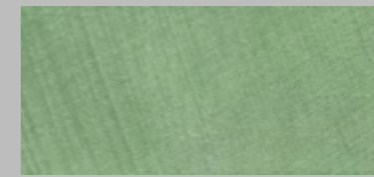
1500/34 - Mohair Base 1500/34



1500/39 - Dimity Base 1500/39



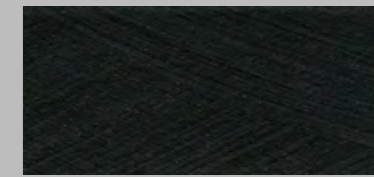
1500/44 - Gannex Base 1500/44



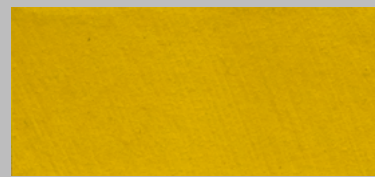
1500/49 - Himroo Base 1500/49



1500/54 - Poplin Base 1500/54



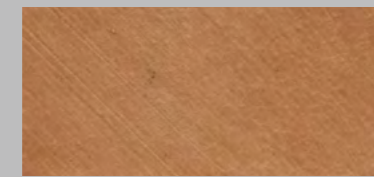
1500/59 - Wigan Base 1500/59



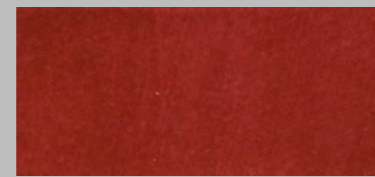
1500/05 - Lamé Base 1500/05



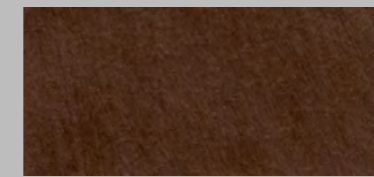
1500/10 - Organdy Base 1500/10



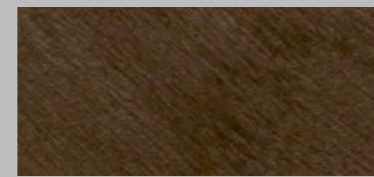
1500/15 - Melton Base 1500/15



1500/20 - Flax Base 1500/20



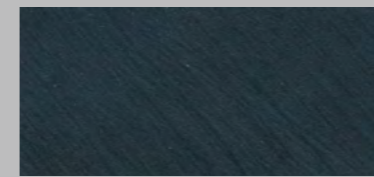
1500/25 - Toile Base 1500/25



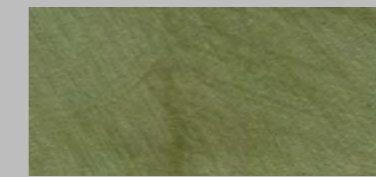
1500/30 - Cashmere Base 1500/30



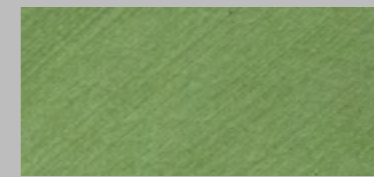
1500/35 - Brocade Base 1500/35



1500/40 - Denim Base 1500/40



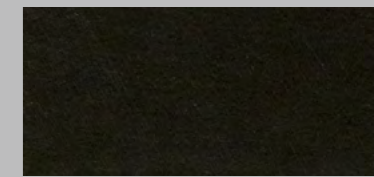
1500/45 - Jacquard Base 1500/45



1500/50 - Yarn Base 1500/50



1500/55 - Madras Base 1500/55



1500/60 - Carbon Base 1500/60



1500/05 - Lamé Base 1500/05



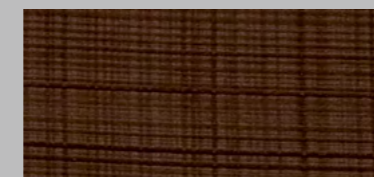
1500/10 - Organdy Base 1500/10



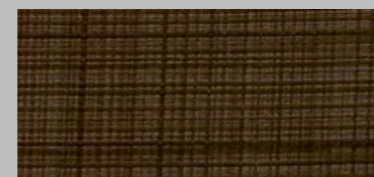
1500/15 - Melton Base 1500/15



1500/20 - Flax Base 1500/20



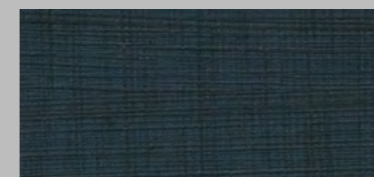
1500/25 - Toile Base 1500/25



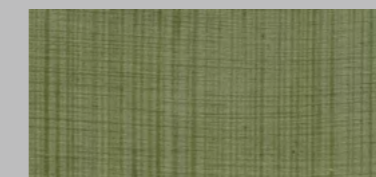
1500/30 - Cashmere Base 1500/30



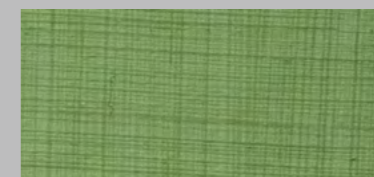
1500/35 - Brocade Base 1500/35



1500/40 - Denim Base 1500/40



1500/45 - Jacquard Base 1500/45



1500/50 - Yarn Base 1500/50



1500/55 - Madras Base 1500/55



1500/60 - Carbon Base 1500/60