

**NEIL'S POSSE**

Crafting Dreams

**HAND  
KNOTTED  
RUGS**

**CATALOGUE 2021**



# NEIL'S POSSE

Crafting Dreams

Neil's Posse has established itself as an international design company deeply rooted in traditional techniques, craftsmanship, uncompromising quality and Indian design. We aim to tell stories with our modern rugs by bringing together design, tradition and simple style with the traditional techniques. It's this behind the scenes creative process that makes the designs stand out. Neil's Posse is much more than modern interior design. The careful selection of wool, viscose, cotton and other raw materials and shades of colour, the passion and patience, the thickness and the details in the weaving are present like a perfect tana-bana in all our rugs.

## ABOUT THE RUG

There are various types of rug patterns and designs in hand knotted rugs that give more options to choose from. Hand knotted rugs are the epitome of design and quality, and possess the highest level of detail that only emerges at the hands of a master craftsman.

The other rug fibers we use are bamboo silk, viscose, jute, cotton and others. Wool and silk are quite a popular blend in our hand knotted carpets.

Hand knotted rugs also come in small and very large sizes. These rugs also come in all shapes like round, square triangle, etc. If you are looking for a custom hand knotted rug, reach out to us at [info@neilsposse.com](mailto:info@neilsposse.com).

Another great advantage of knotted rug is that its made in plenty of colors. Match your flooring with the walls or the curtains. You can choose the color that decorates your room more beautiful.

Other than colors and shapes, they are also made in many designs and patterns. Hand knotted rugs can carry modern, traditional as well as contemporary designs, A hand-knotted carpet is an investment that will brighten up your home for years to come. With the right care, it will last for generations and only increase in value.







NEIL'S POSSE

#NP/KN/01

NEIL'S POSSE





#NP/KN/02



#NP/KN/03



#NP/KN/04



#NP/KN/05





NEIL'S POSSE

#NP/KN/06



NEIL'S POSSE

#NP/KN/07









#NP/KN/09



#NP/KN/10



#NP/KN/11



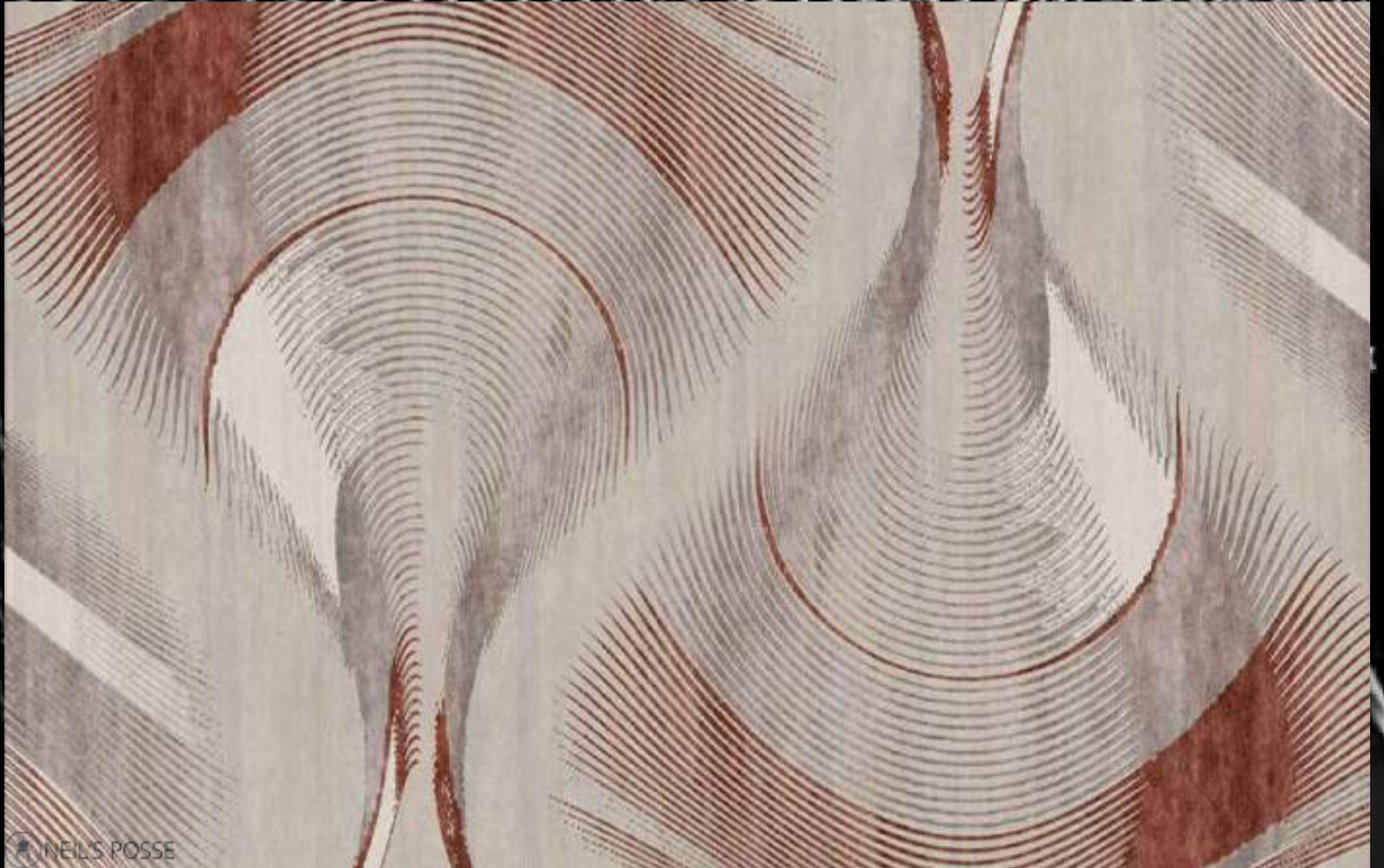


#NP/KN/12



#NP/KN/13

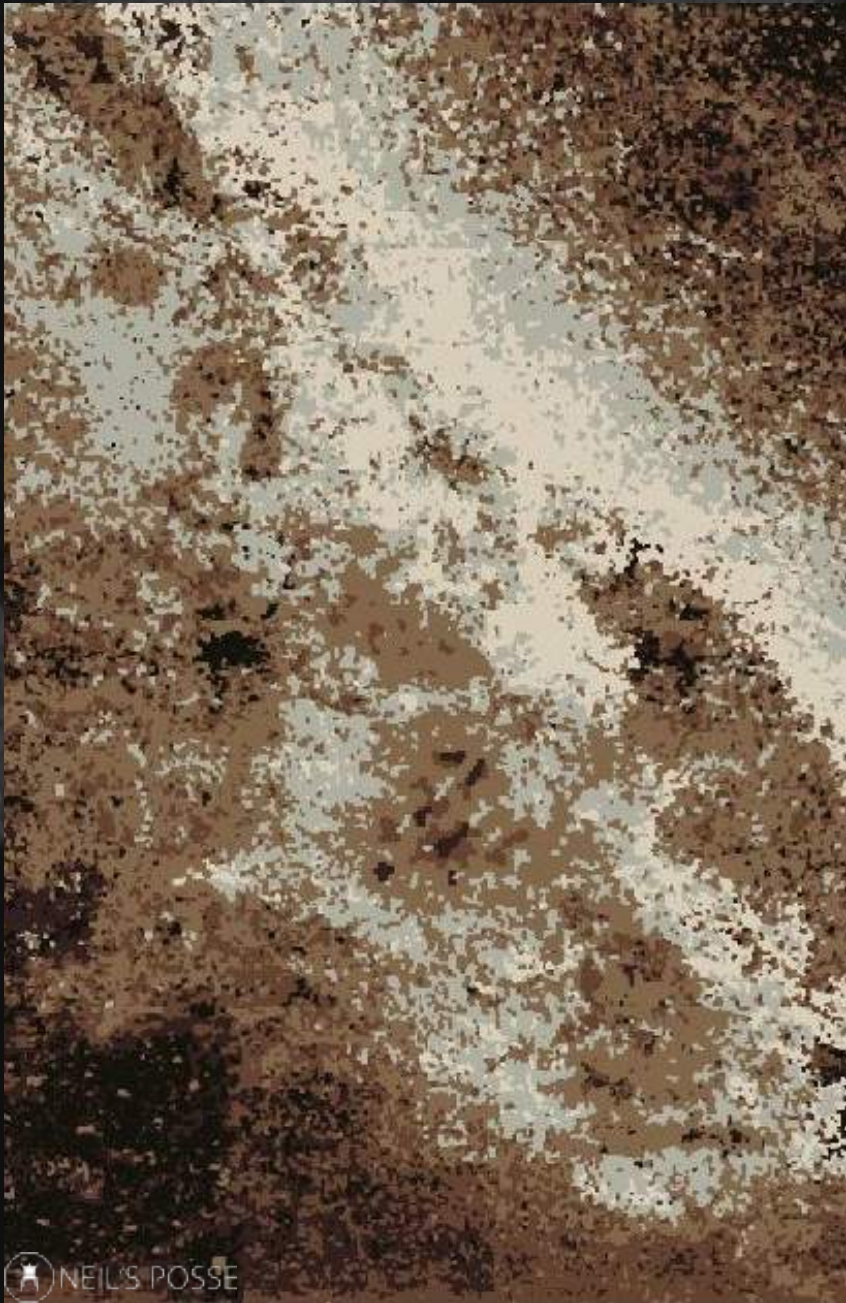




INEILS POSSE

#NP/KN/14





NEIL'S POSSE

#NP/KN/15



NEIL'S POSSE

#NP/KN/16



NEIL'S POSSE

#NP/KN/17





NEIL'S POSSE

#NP/KN/18



NEIL'S POSSE

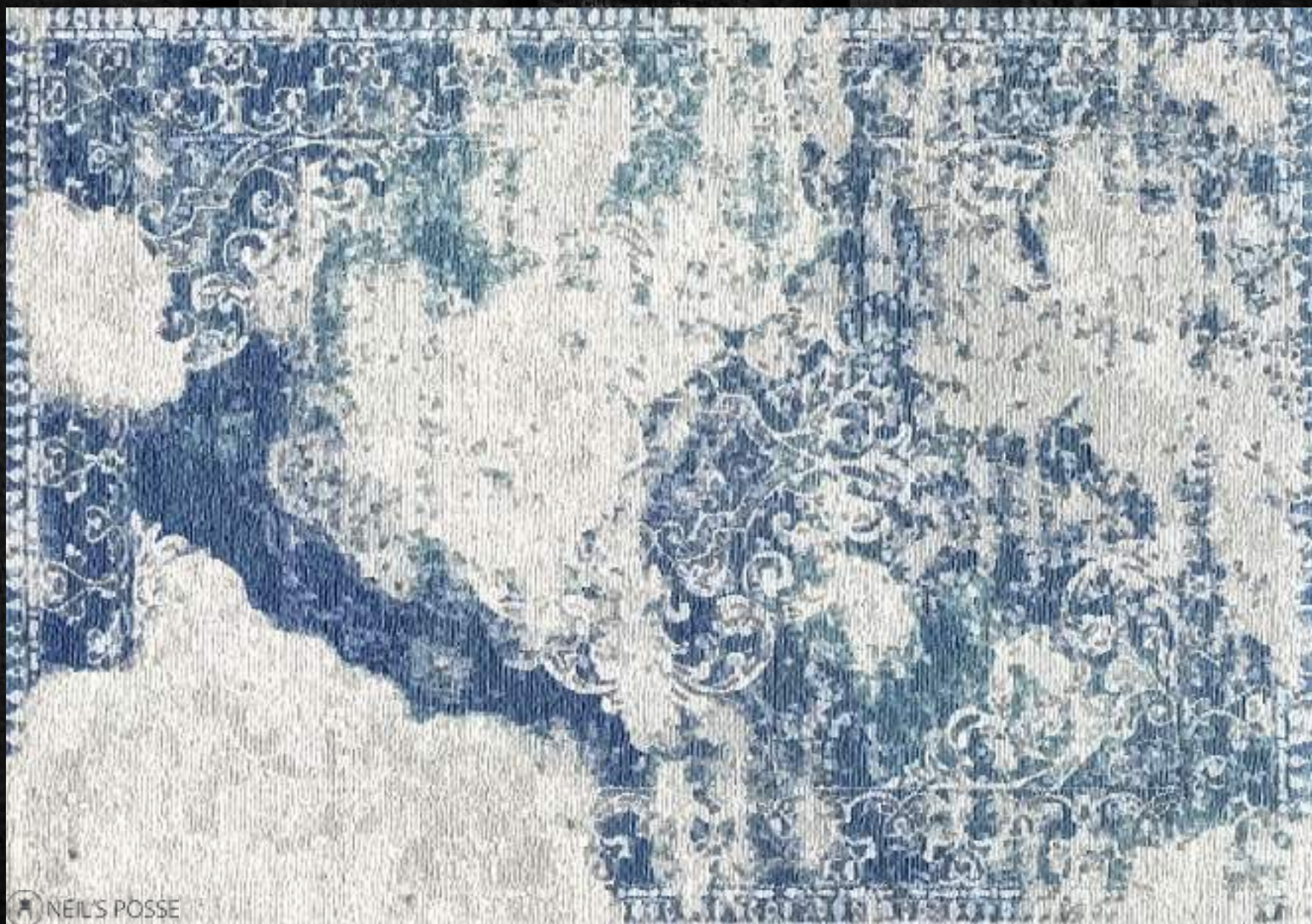
#NP/KN/19



NEIL'S POSSE

#NP/KN/20





NEIL'S POSSE

#NP/KN/21





NEIL'S POSSE

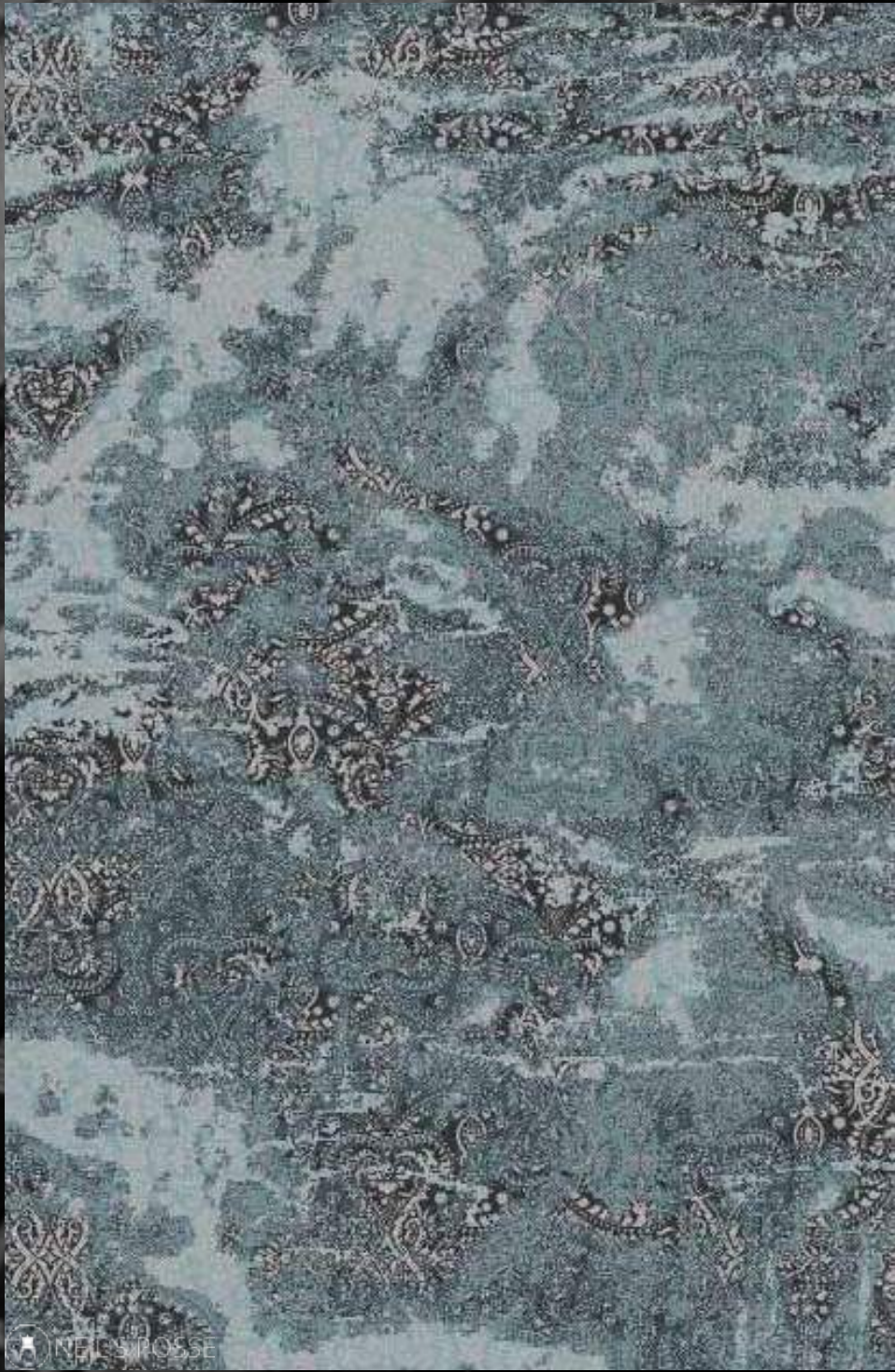
#NP/KN/22



NEIL'S POSSE

#NP/KN/23





★ NEIL'S POSSE

#NP/KN/24



★ NEIL'S POSSE

#NP/KN/25





NEIL'S POSSE

#NP/KN/26





NEIL'S POSSE

#NP/KN/27



NEIL'S POSSE

#NP/KN/28



NEIL'S POSSE

#NP/KN/29





NEIL'S POSSE

#NP/KN/30



NEIL'S POSSE

#NP/KN/31

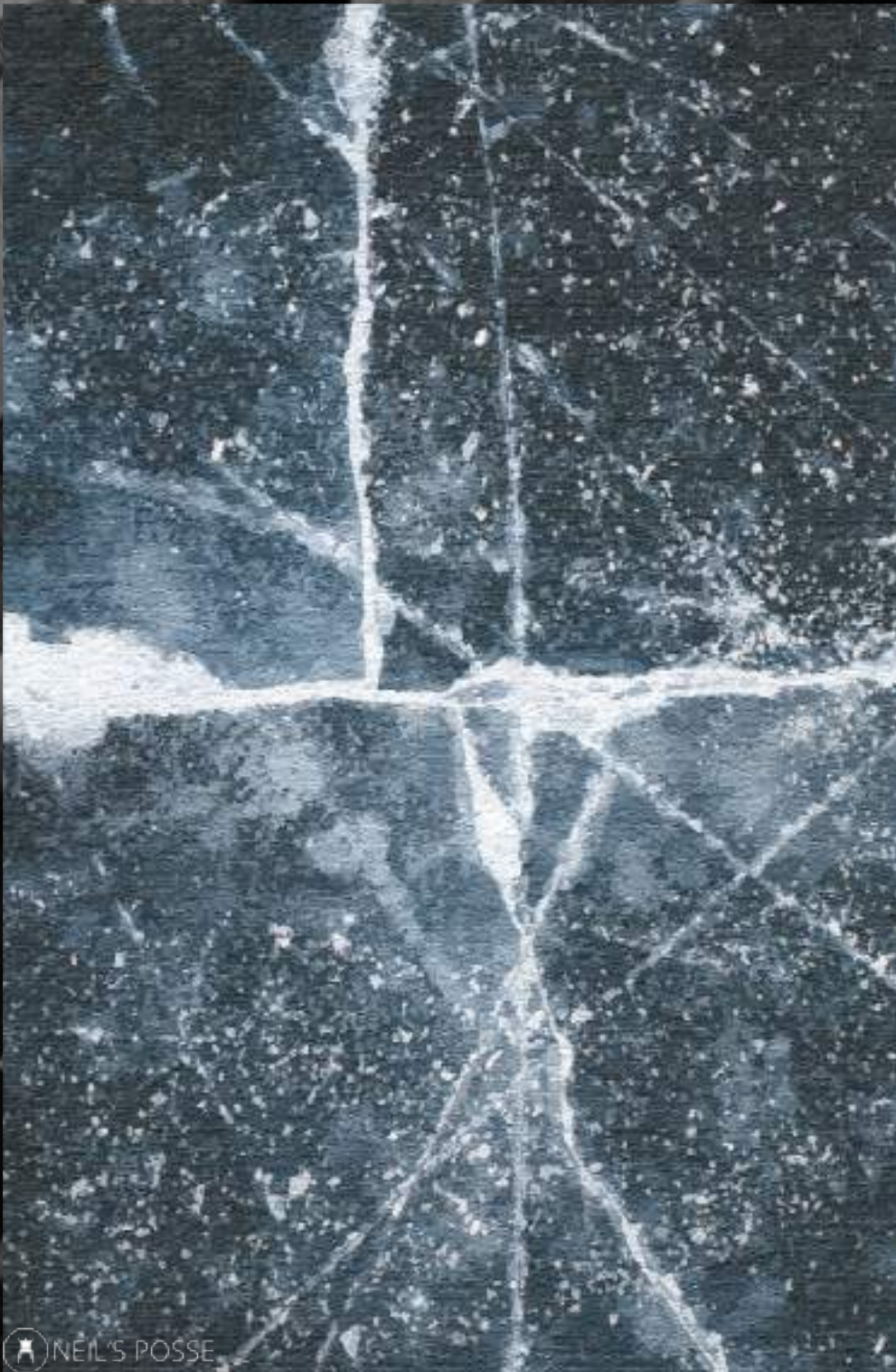




NEIL'S POSSE

#NP/KN/32





NEIL'S POSSE

#NP/KN/33



NEIL'S POSSE

#NP/KN/34





#NP/KN/35



#NP/KN/36













NEIL'S POSSE

#NP/KN/38



NEIL'S POSSE

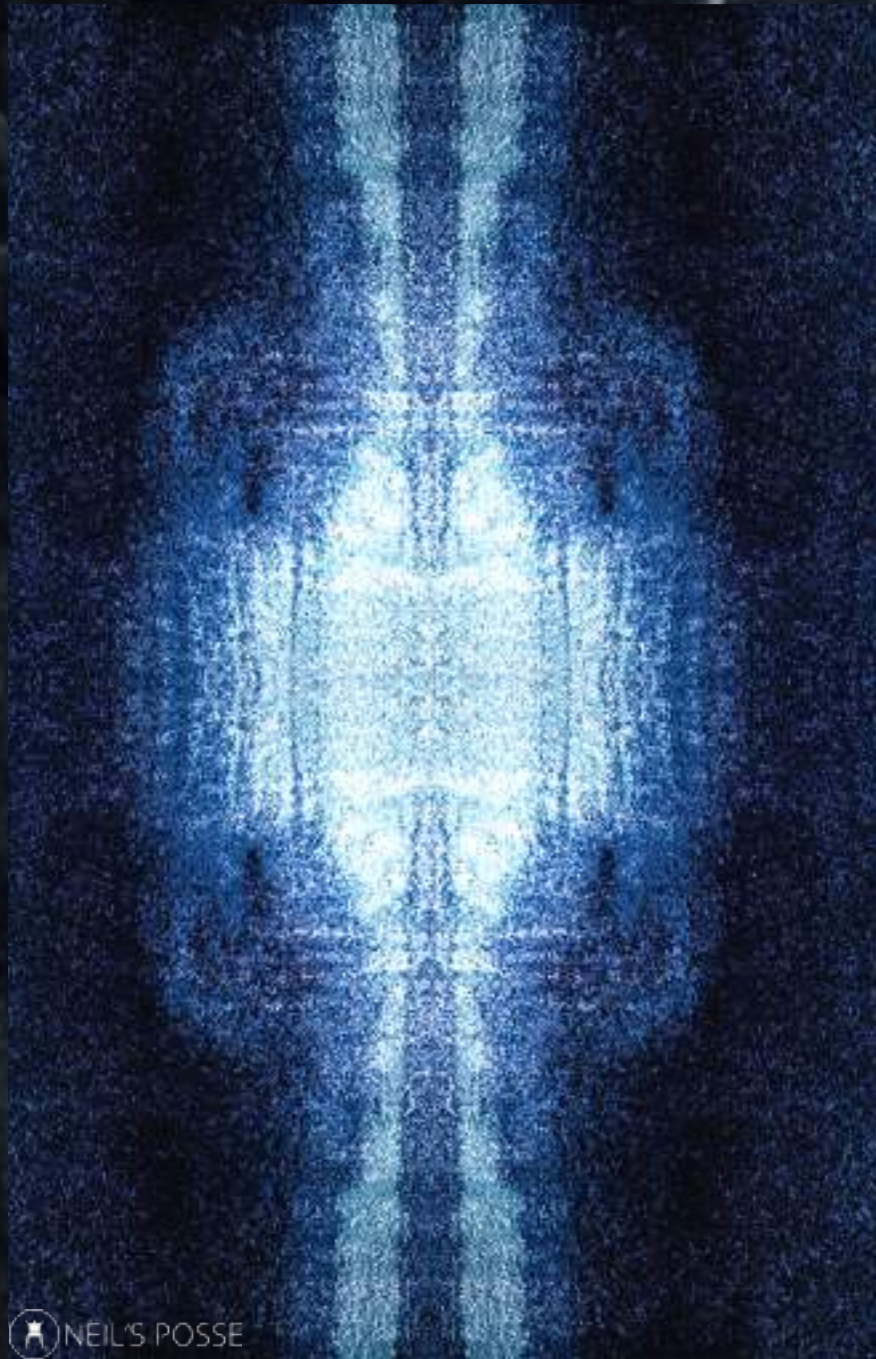
#NP/KN/39




NEIL'S POSSE

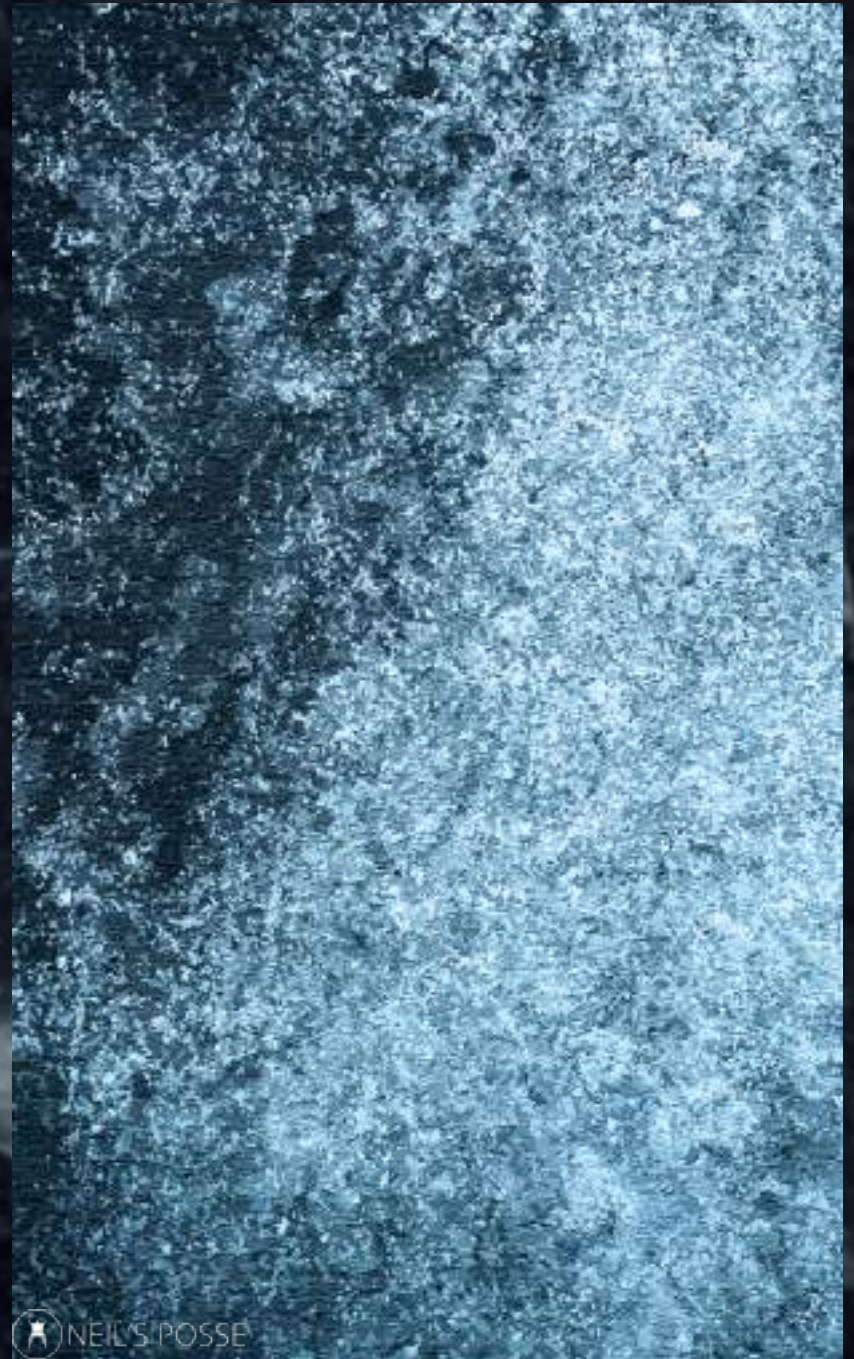
#NP/KN/40





 NEIL'S POSSE

#NP/KN/41



 NEIL'S POSSE

#NP/KN/42





THE L'S POSSE

#NP/KN/43





NEIL'S POSSE

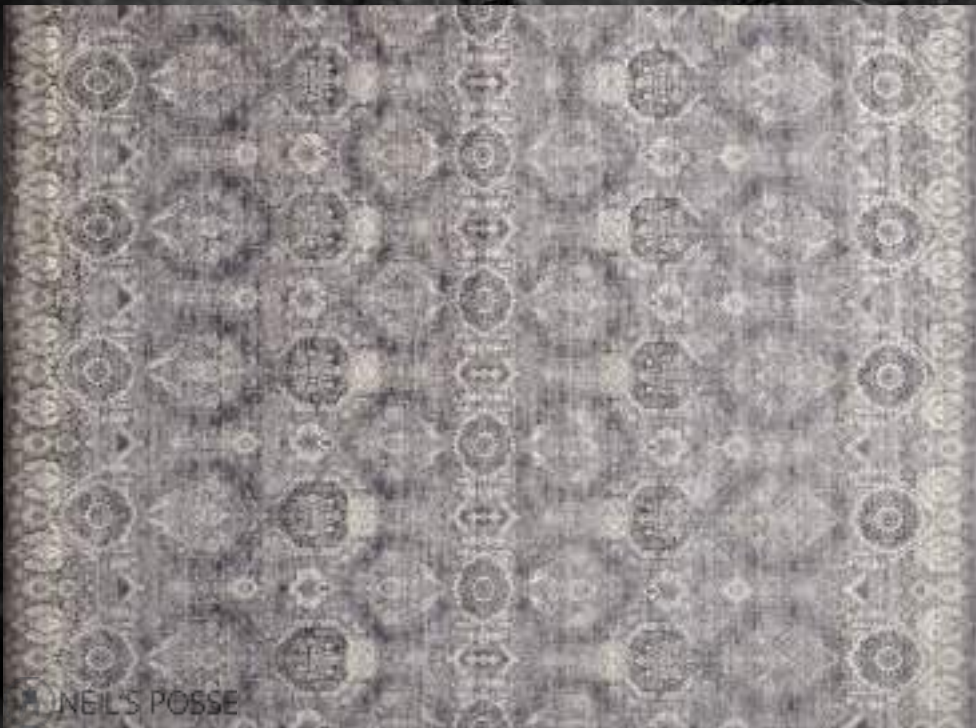
#NP/KN/44



NEIL'S POSSE

#NP/KN/45





#NP/KN/46



#NP/KN/47



#NP/KN/48



#NP/KN/49





LINEA POSSE

#NP/KN/50





## *Skill and Experience*

Neil's Posse keenly supports the craftsmanship of the authentic rug workers who have been weaving since generations.

We are determined to keep the originality of the art alive and well.







#NP/KN/51



#NP/KN/52



#NP/KN/53





NEIL'S POSSE

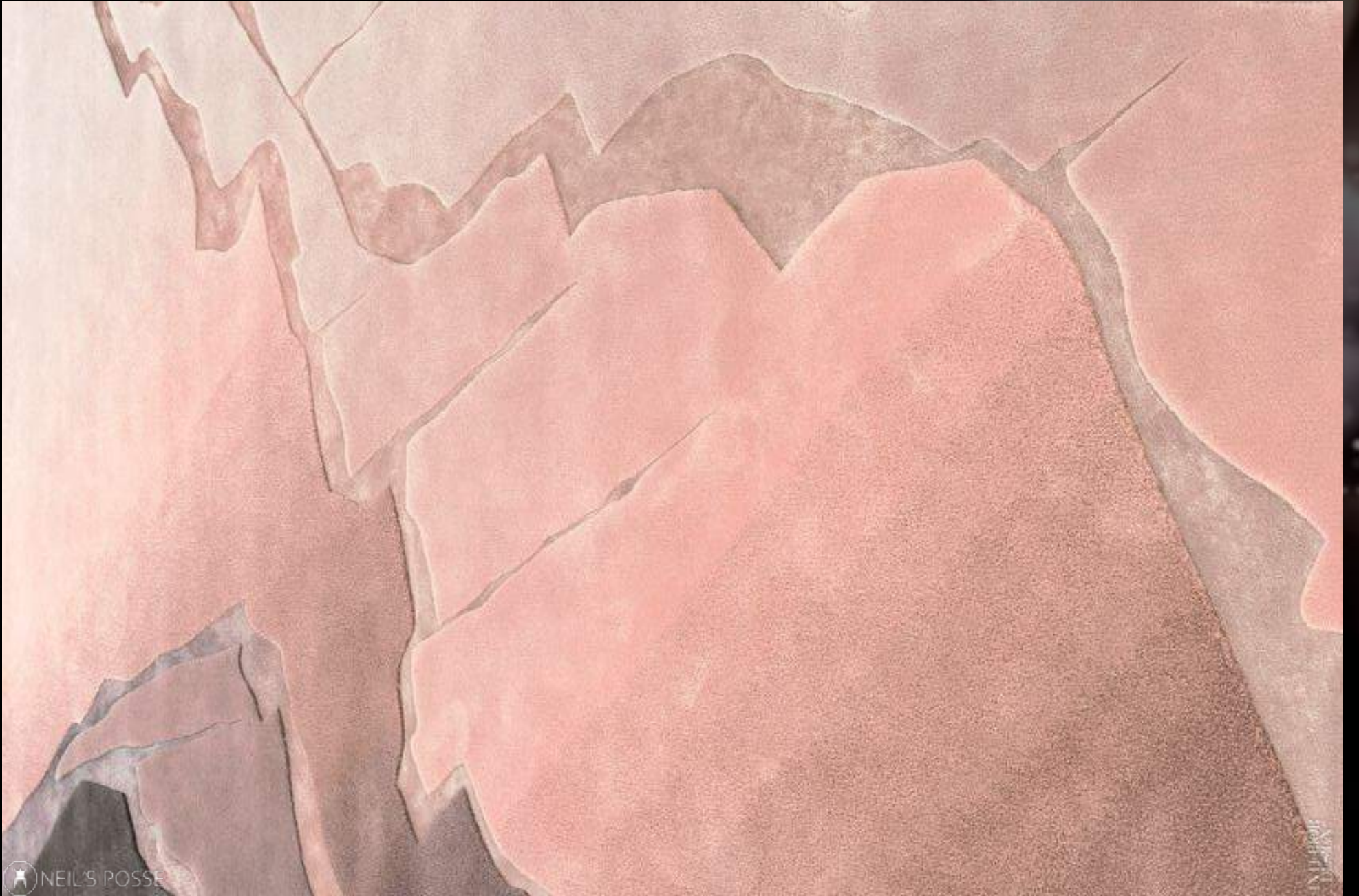
#NP/KN/54



NEIL'S POSSE

#NP/KN/55



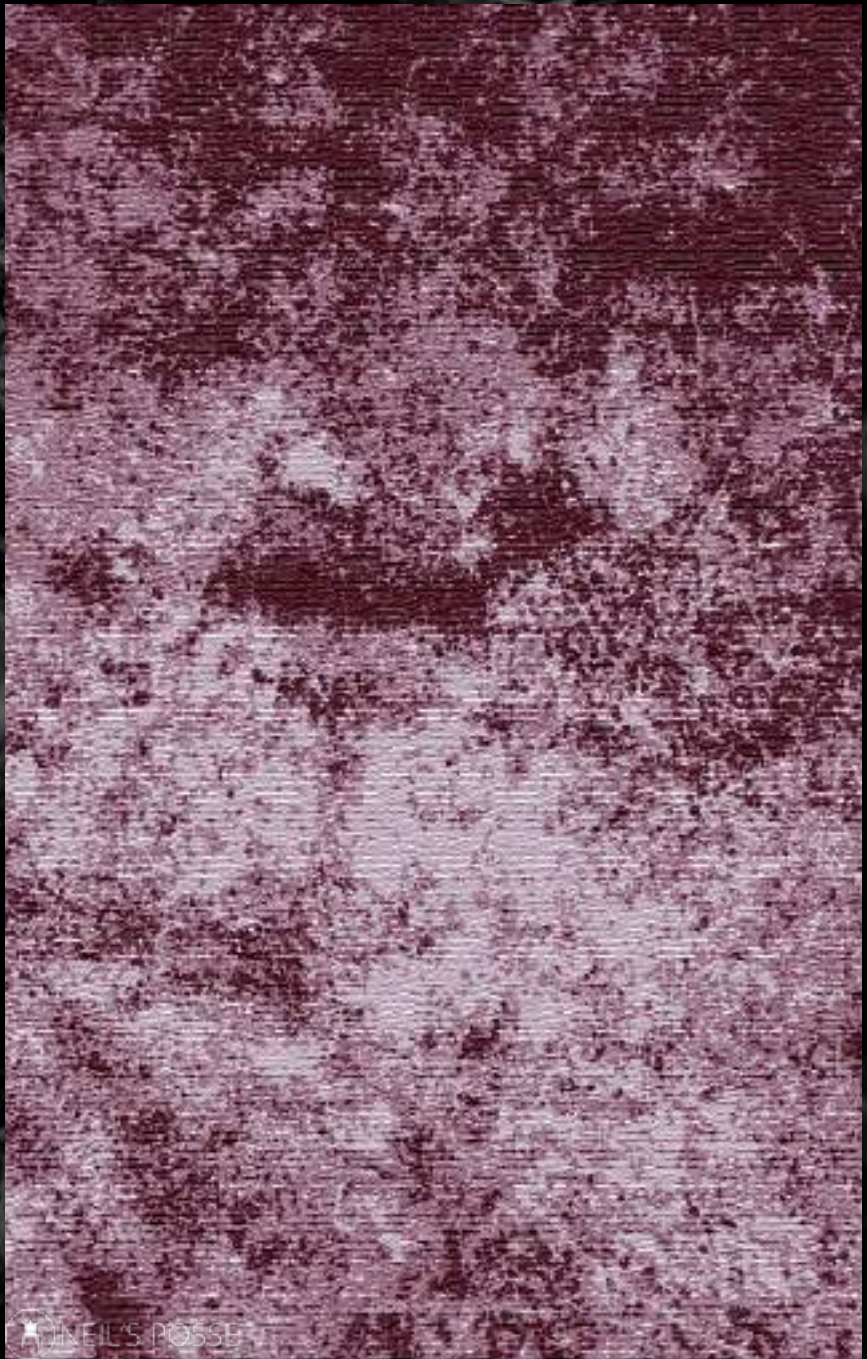






NEIL'S POSSE

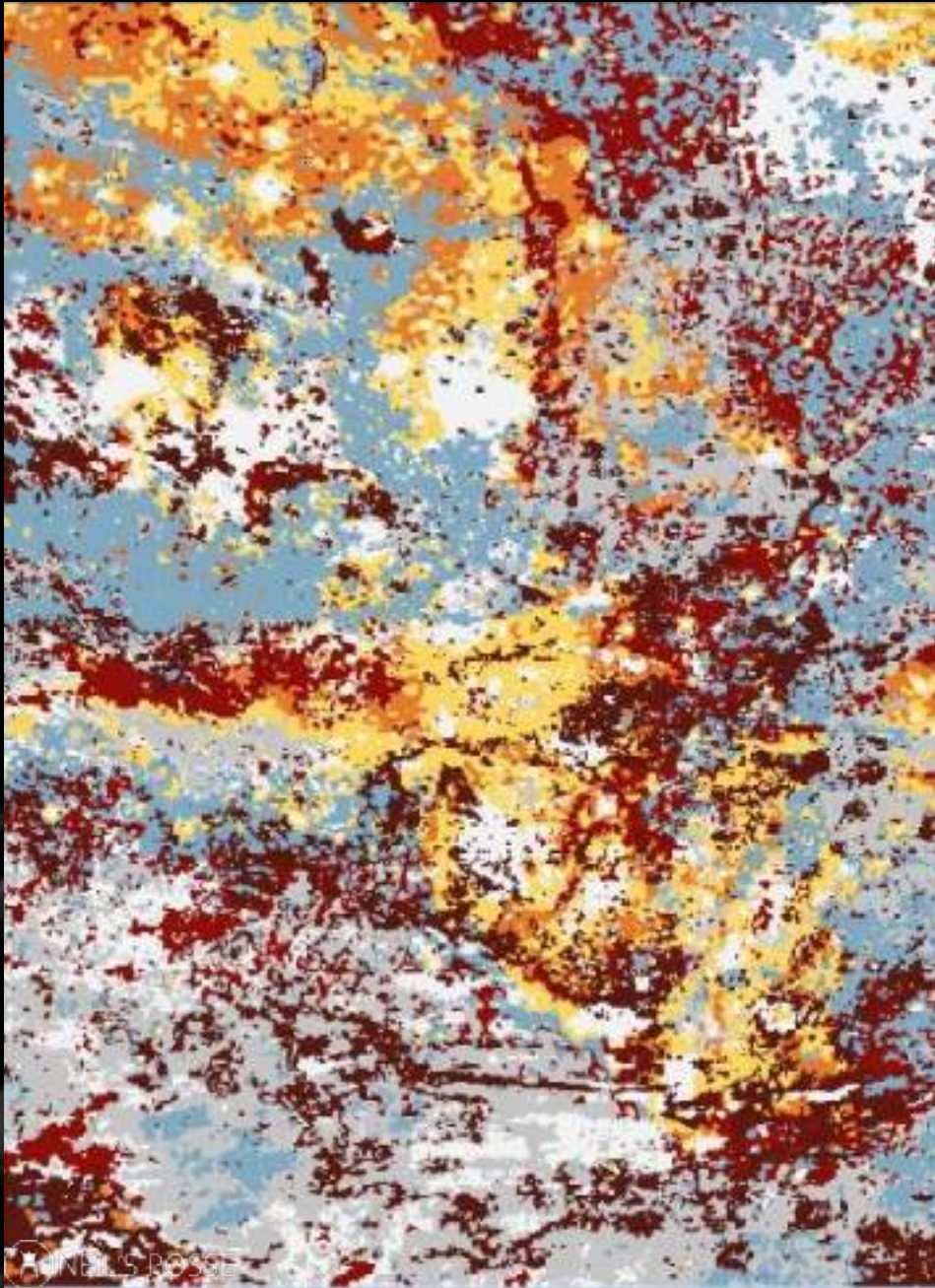
#NP/KN/57



NEIL'S POSSE

#NP/KN/58





★ NEIL'S POSSE

#NP/KN/59



★ NEIL'S POSSE

#NP/KN/60





NEILS POSSE

#NP/KN/61

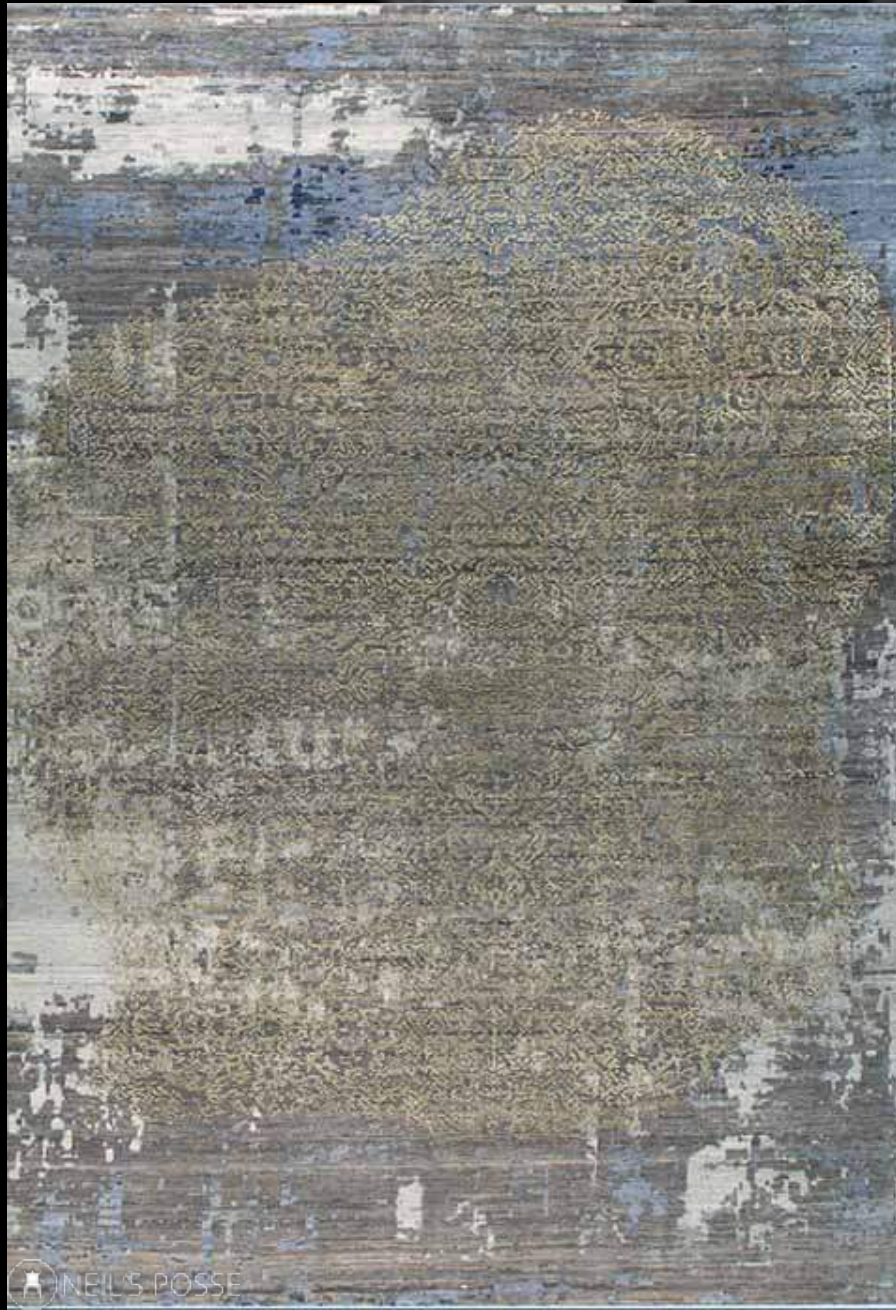






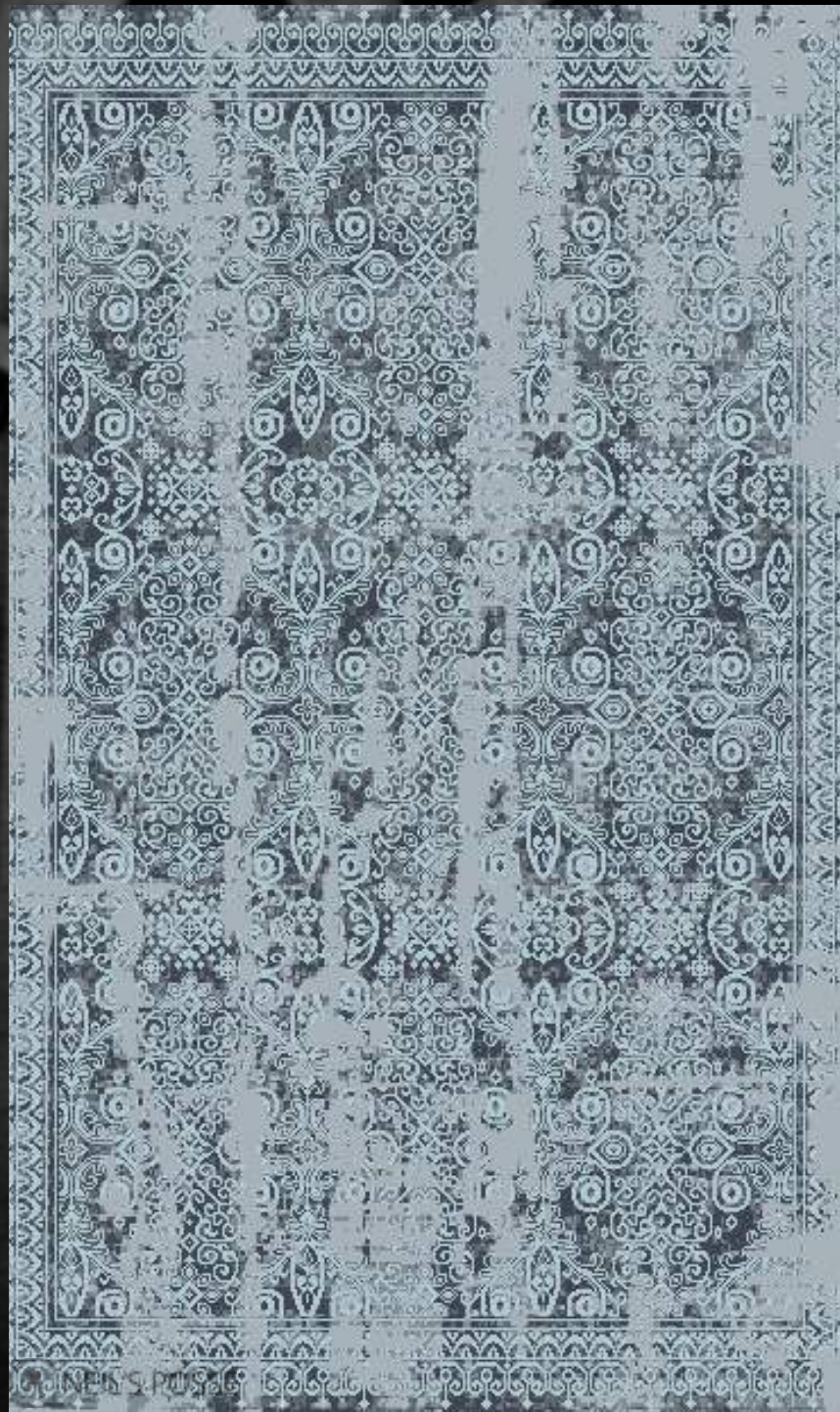


#NP/KN/62



#NP/KN/63





#NP/KN/64



#NP/KN/65



#NP/KN/66





NEEL'S POSSE

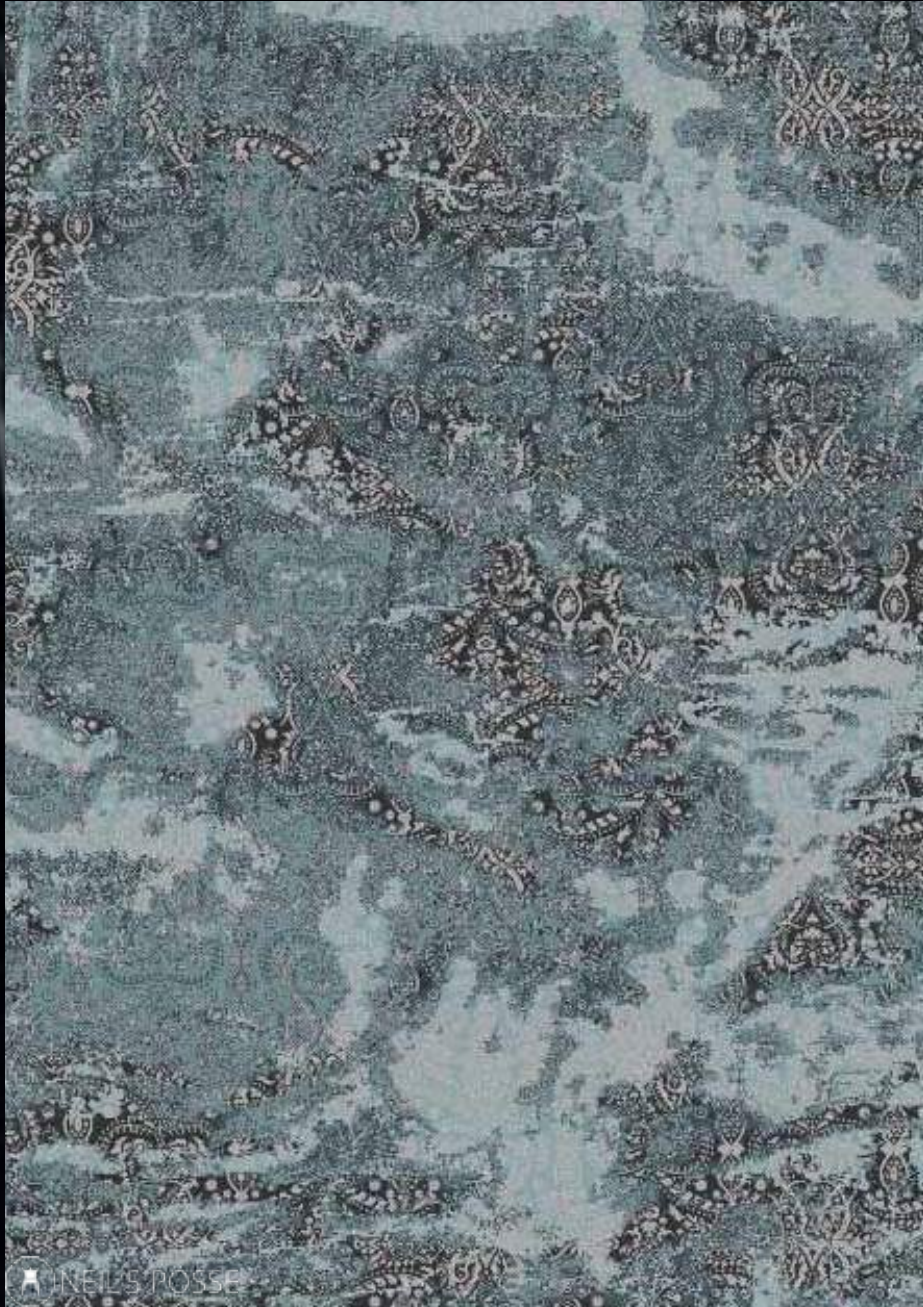
#NP/KN/67



NEEL'S POSSE

#NP/KN/68





NEIL'S POSSE

69

#NP/KN/69



NEIL'S POSSE

#NP/KN/70





NEI'S POSSE

#NP/KN/71





ONEIL'S ROSSE

#NP/KN/89



ONEIL'S ROSSE

#NP/KN/90





#NP/KN/74



#NP/KN/75





NELE SPOSSE

#NP/KN/76





#NP/KN/77



#NP/KN/78





#NP/KN/79



#NP/KN/80





#NP/KN/81





NEIL'S POSSE

#NP/KN/82



NEIL'S POSSE

#NP/KN/83



NEIL'S POSSE

#NP/KN/84





NEIL'S POSSE

#NP/KN/85



NEIL'S POSSE

#NP/KN/86





#NP/KN/87



#NP/KN/88





NEIL'S POSSE

#NP/KN/72



NEIL'S POSSE

#NP/KN/73





NEIL'S POSSE

#NP/KN/91



NEIL'S POSSE

#NP/KN/92



NEIL'S POSSE

#NP/KN/93



NEIL'S POSSE

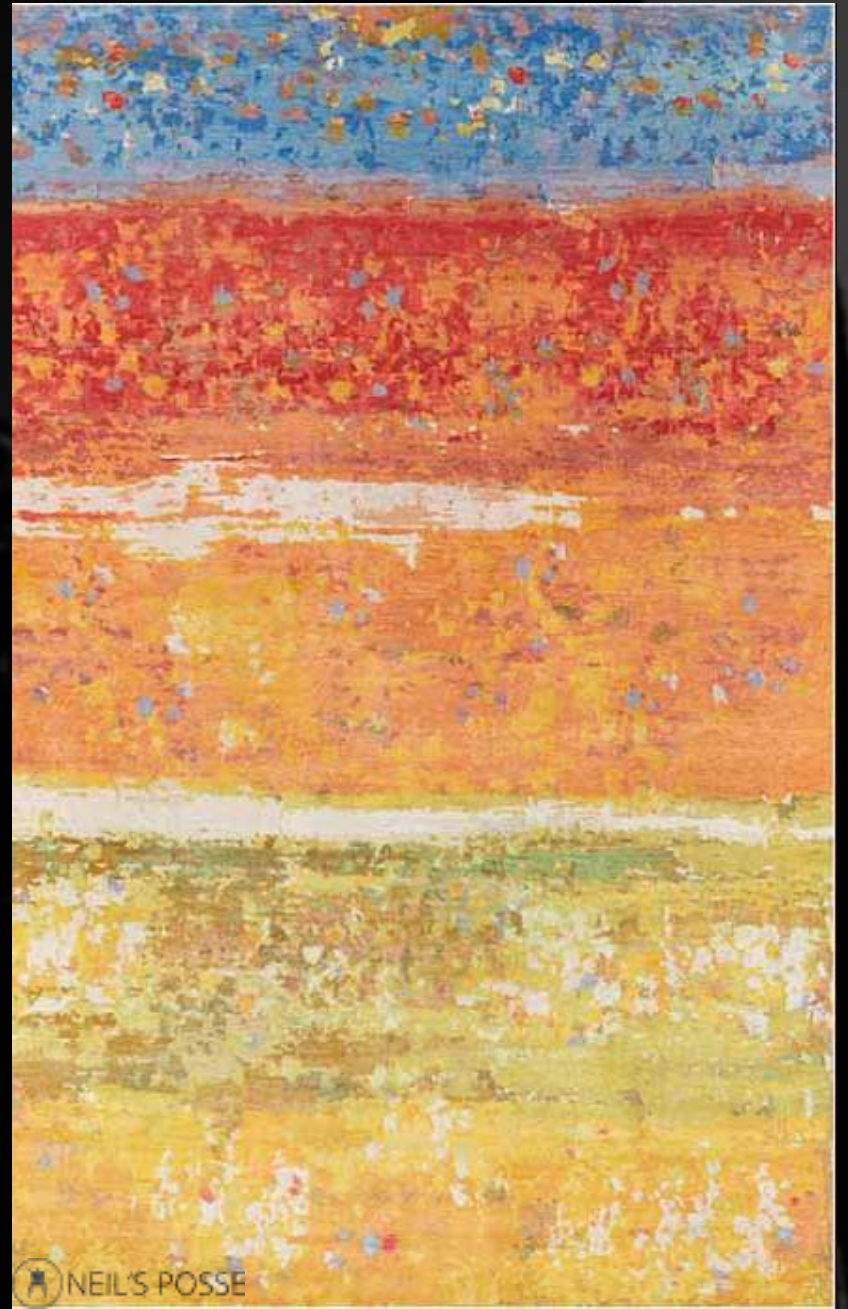
#NP/KN/94





NEIL'S POSSE

#NP/KN/95



NEIL'S POSSE

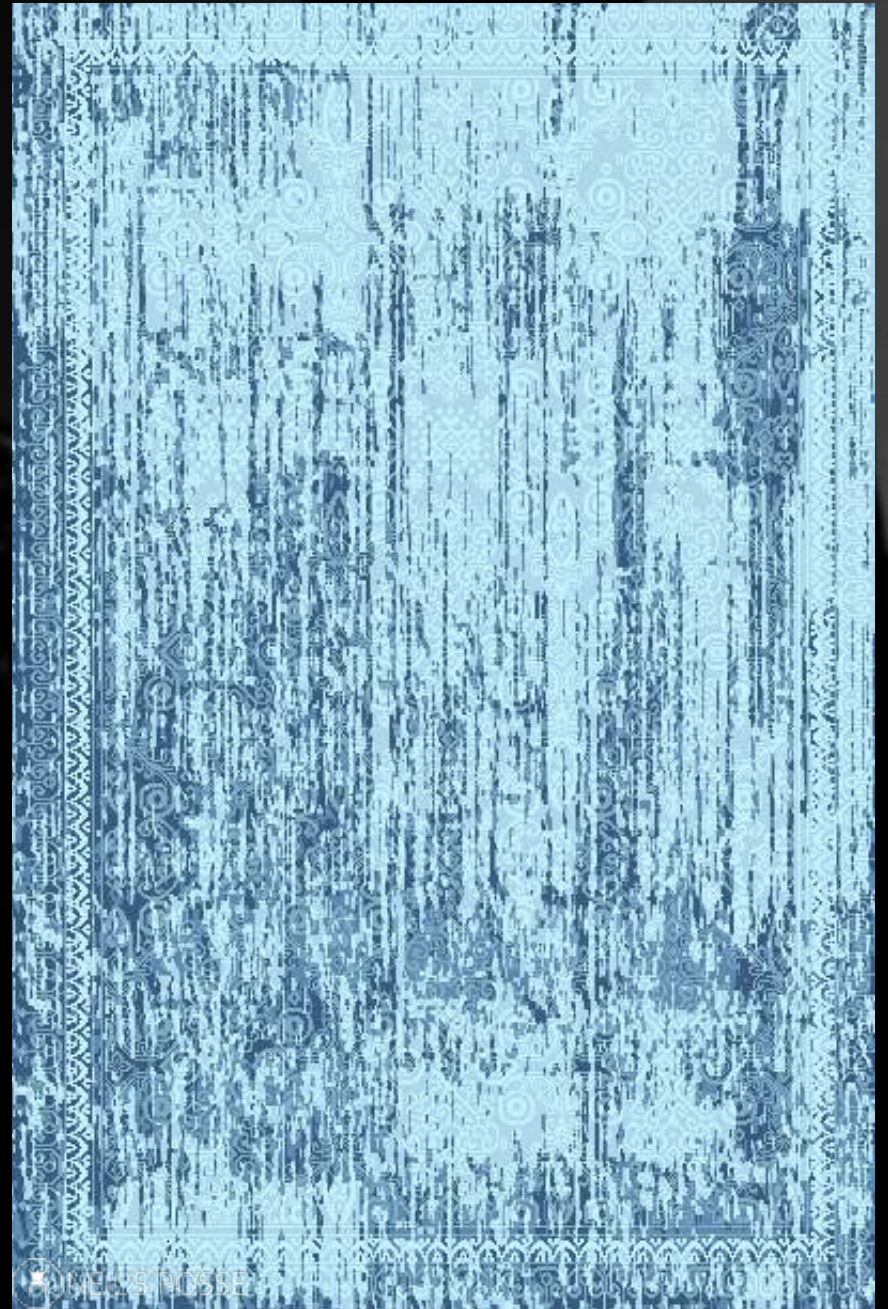
#NP/KN/96





NEIL'S POSSE


#NP/KN/97



NEIL'S POSSE

#NP/KN/98





Our rugs feature a variety of pile heights, this allows for a custom feel beneath your feet that is -  
**JUST AS YOU LIKE IT !**



Low-pile rugs have a height of less than a quarter of an inch and tend to feel very dense under the hands and feet. These types of rugs are good for high-traffic areas and kids' rooms.



Medium-pile rugs are anywhere from a quarter of an inch to a half-inch high. These are preferred for areas like a living or bedroom as they feel good under bare feet.



High-pile rugs have a pile that can range anywhere from a half-inch to three-quarters of an inch. These are best suited to areas such as master bedroom, where traffic is low and need some extra warmth.





## CARE ADVICE: HAND KNOTTED RUGS

All rugs retain their appearance and shape for longer if you remove dirt and stains regularly. If you have a light, single-colour rug you will naturally need to clean it more often than a darker, patterned rug. Shaking or beating a hand knotted rug subjects it to rough treatment that can damage the rug. We therefore recommend that you vacuum and air your rug instead. If you have a hand knotted rug, you can also turn it upside down and carefully beat the reverse side so that loose dirt drops out.

### **Vacuum clean often**

Effective vacuuming is the easiest and most environmentally friendly cleaning method. It is also the most economical. When you vacuum regularly you remove all the loose dirt and dust. Do not use a vacuum cleaner with a rotary brush nozzle on long pile rugs where there is a risk of damaging the yarn and the twisted thread pairs. Note that it is quite normal for the rug to loose individual fibers when used, these are excess fibers and does not affect the general quality of the rug. If you want to get rid of excess fibers faster, you can vacuum the rug daily for an initial period.

### **Comb long-pile rugs**

To maintain the appearance of your long-pile rug you can comb the pile of the rug at regular intervals. You can do this with a coarse-toothed comb or a small plastic rake.

### **Rotate the rug**

To get a more even exposure to sunlight and wear, we recommend that you rotate the rug regularly.

### **Remove stains**

For best results, remove stains immediately. With dry stains, we recommend scraping and then vacuum clean the remaining. Begin from the edge of the stain and scrape towards the center. Take care not to damage the fibers. Remove wet stains by laying kitchen roll on the stain. Then use lukewarm water and a cloth or sponge. Dampen the stain, soak up the water, then repeat the process until the stain is gone. Remember that hand knotted rugs in linen are sensitive to water, so take particular care with the amount of water you use. Do not rub the stain, as that makes it more difficult to remove, and can also damage the fibers.

On greasy and other difficult stains, you can use a PH-neutral, bleach-free cleaner. Sponge thoroughly to remove all traces of the cleaner, so that the fibers can regain their natural properties. Residual cleaner can cause allergies.

### **Professional cleaning**

We recommend that the rug is cleaned by a professional cleaner, using the extraction method on a flat surface. The quantity and temperature of the water will depend on the material and pile length. Good ventilation during the drying process is essential. Shrinkage will be about 3-5%. Neil's Posse's rugs are not to be machine-washed or dry-cleaned.



# Made To Measure

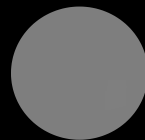
If you need the perfect rug to fit a specific spot in your home, we have a made to measure service available for the majority of our designs.

As all our rugs are unique and handmade, the size can vary slightly from the ordered size (+/-5%).

Irregularities in colour and weaving are characteristics of hand-made rugs.



10x10



8 x 8



6 x 6



3 x 13



5 x 8



8 x 10



12x15



4 x 10



4 x 6



6 x 10



10x14



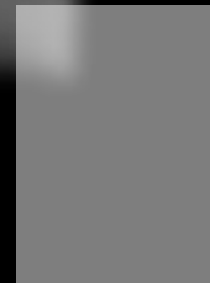
2 x 8



3 x 5



6 x 9



9x12



2 x 6



2 x 3



6 x 8



8 x 11

 **Premium design.**

Custom shapes and sizes are available on request.  
Contact us on [info@neilsposse.com](mailto:info@neilsposse.com).



**Decor won't be  
complicated because  
we're here for you.**

---



Made In India.

## **CONTACT INFO**

---

### **Reg. Office-**

Neil's Posse  
D-64, Sawai Madho Singh Road.  
Banipark. Jaipur. Raj. 302016  
+91 99836 59988

### **Experience Center-**

Neils Posse  
111, 412A, Shipra Path, Mansarovar Sector 7,  
Agarwal Farm, Jhalana Chhod, Mansarovar,  
Jaipur, Rajasthan 302020

### **Bengaluru Office-**

Neils Posse  
c/o LEA Rugs & Lightings  
No. 1, Raksha Nikunj, Boyalahalli Main Road  
BK Halli Post - 562149  
+91 98452 68127

### **Works-**

77, Sarroi-1. Bhadohi.  
Uttar Pradesh.

# **NEIL'S POSSE**

---

**Crafting Dreams**

/neilsposse



/neilsposse



@neilsposse



/neilsposse



/neilsposse



[info@neilsposse.com](mailto:info@neilsposse.com)

[www.neilsposse.com](http://www.neilsposse.com)