



COLORTEK®

**LIQUID METAL®
DECORATIVE ALLOY**

Wall and Floor
Liquid Metal Coating

LIQUID METAL[®] DECORATIVE ALLOY

Transform interior design finishes and elements into high value metallic works of art. Be it a simple panel or door right through to a sculptural bespoke wall – Colortek Liquid Metal technology applies a stunning real metal finish to any design.

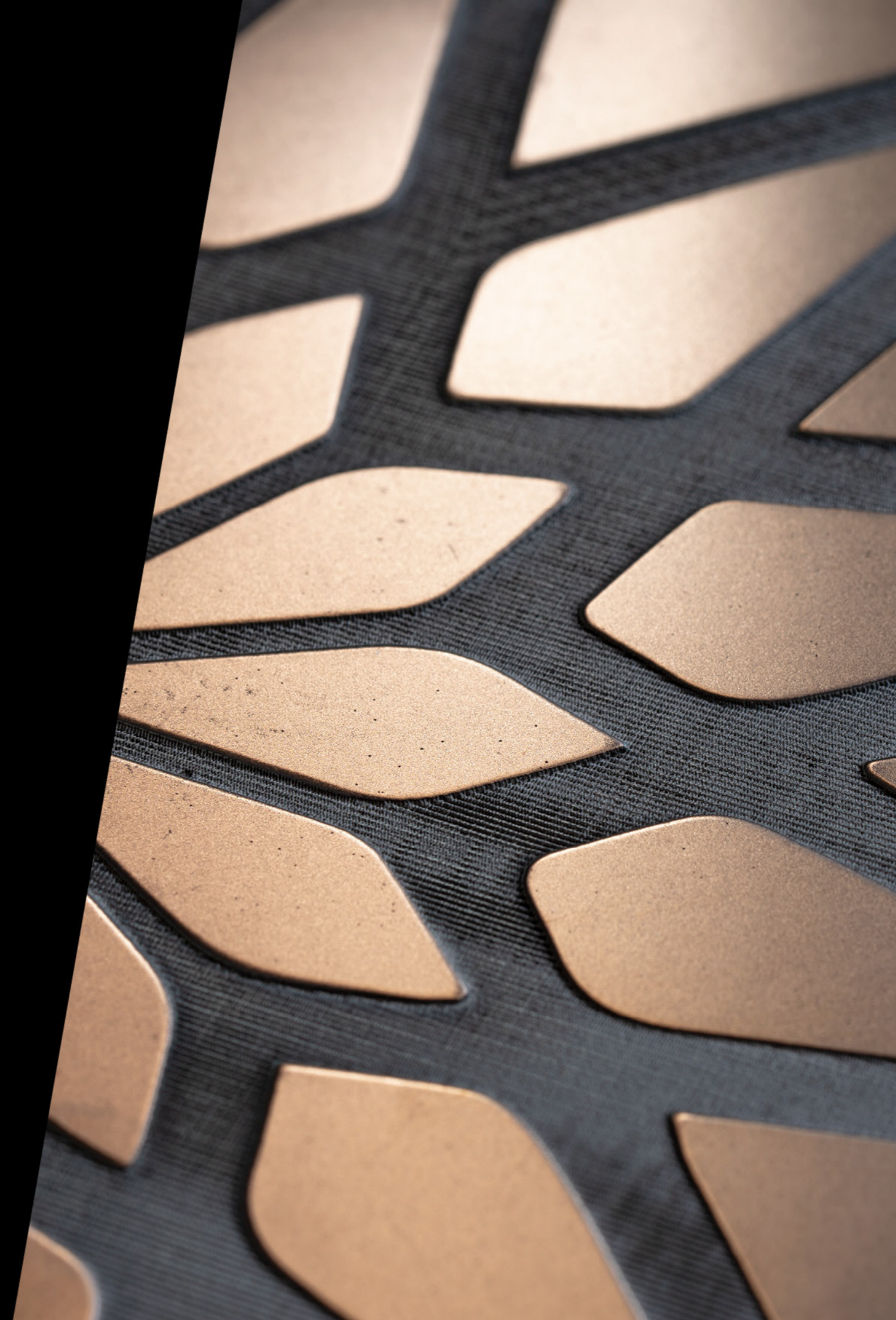
Suitable for interior and exterior application over any surface and offering a lightweight, seamless coating solution that stretches across the substrate like a metallic skin, Liquid Metal emphasizes the important lines and contours of the design, more significantly giving the decorative pattern or element the intensity, touch and properties of real metal.

Disclaimer: Due to printing technologies specifications, actual colors may vary from those displayed in this catalog.

www.colortek.eu

Liquid Metal, Colortek, Wall & Floor Fashion and the Colortek Drop Symbol are registered trademarks.

© 2018





FORGING INNOVATION IN DECORATIVE FINISHES

Liquid Metal bridges the gap between the ancient history of Metal Art and the designer's instinctive desire to create exceptional spaces by giving them access to a material composed of actual ore in liquid form, allowing them to shape the aesthetic value of their project with real metalwork craftsmanship.

01. BESPOKE DESIGN

Colortek Terre de Lune
Liquid Metal – Silver Drummer

02. BESPOKE DESIGN

Colortek Terre de Lune Stenciling
Liquid Metal – White Bronze

01



02



03



04

TECHNOLOGY AND TECHNIQUE AT THE SERVICE OF DESIGN

Liquid metal is a cold applied coating, that can be even painted on delicate materials, seamlessly and without adding structural weight, allowing for mundane surfaces of any shape and texture to be shaped into exceptional decorative finishes without risking damage and at a fraction of the cost of other techniques, such as molding and curving.

03. BESPOKE DESIGN
Colortek Terre de Lune Stenciling
Liquid Metal – Silver Drummer

04. CUSTOM OFFICE DESIGN
Project by The Piece Makers
Liquid Metal – Silver Drummer



05

COMPELLING INTERIORS THROUGH STUNNING DETAILS

Liquid Metal unconventional finish can be used on smooth or textured surfaces to enhance their distinctive decorative details, while providing precise handcrafted treatment to obtain exceptional interior wall finishes, bespoke furniture or home accessories.

05. BESPOKE DESIGN

Colortek Oxyd Blue & Iron
Liquid Metal Stenciling – Brass



06

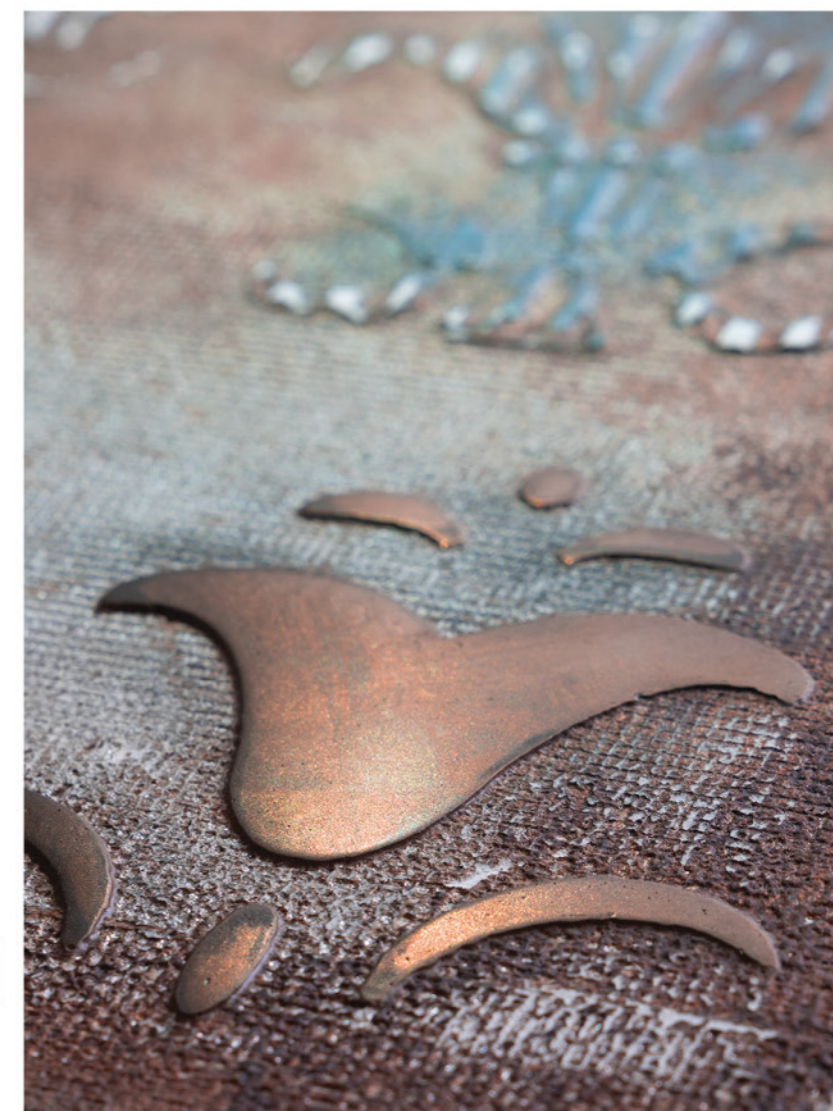
06. BESPOKE DESIGN

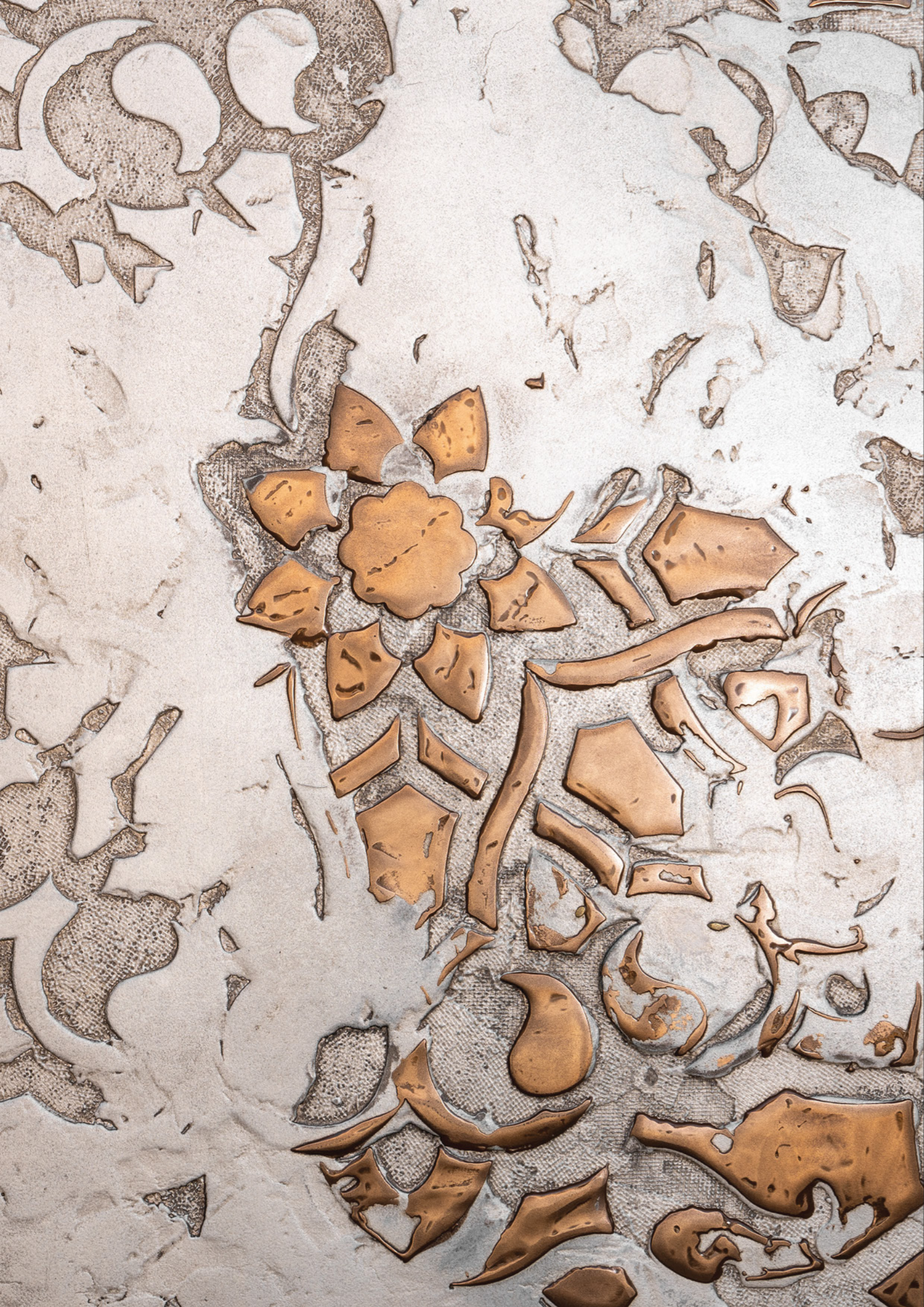
Colortek Polished Plaster Pitted
Liquid Metal – Finest B

07. BESPOKE DESIGN

Colortek Terre de Lune Stenciling
Liquid Metall - Copper

07





AVAILABLE COLORS & TECHNICAL INFORMATION

Liquid Metal combines a technologically advanced product with precise handcrafted treatment that transform any surface into a true metal finish. Our recommendations for achieving the ideal surface are as follow, once the product is properly applied and cured:

1. Use sanding paper 400 grid (twice)
2. Use sanding paper 800 grid
3. Use sanding paper 1500 grid
4. Use sanding paper 3000 grid
5. Use sanding paper 6000 grid (twice)
6. Use Liquid Metal Polish #35
7. Use Liquid Metal Polish #8
8. Apply Liquid Metal Wax

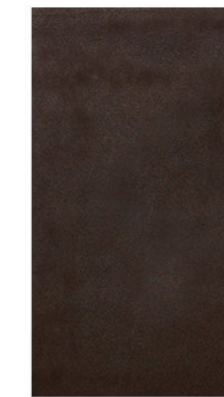
INFORMATION	PASTE FORM	LIQUID FORM
Components	2 components	3 components
Setting	Interior	Interior and Exterior
Application	Trowel	Spray Gun
Metal Thickness	0.2 mm - 1.2 mm	0.1 mm - 0.2 mm
Complementary Products	Wax – Polishing Paste 8, Polishing Paste 35 – Sanding Paper 400, 800, 1500, 3000 and 6000,	



SILVER DRUMMER



ALUMINUM



BRONZE GOLD



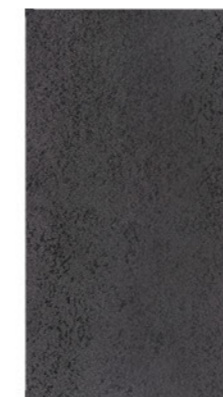
BRONZE



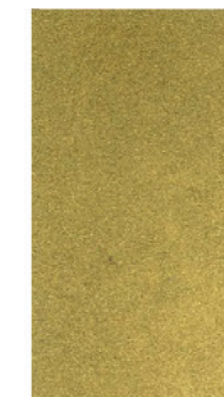
COPPER



WHITE BRONZE



BRASS



GILDING GOLD



FINEST B



BRASS GOLD



COLORTEK

Product designed in the EU

www.colortek.eu
info@colortek.eu



Synergy, Added Value, Continuous Improvement,
Diversity, Integrity, Social Responsibility.

