

Baca®

Baca, world of pearls



500/08 - Nestor
Base 149-1

ENG

Baca®

Baca® is an inspiring pearly smooth decorative finish offering extraordinary reflective accents. Its range of 73 shades will help you create the perfect color scheme.

Technical Name
Silk Luminescent Finish.

Key Properties

- Unleaded
- Water based
- Washable (after full curing)
- Non-flammable
- Odorless
- 6 attractive base colors (500, 506, 507, 508, 509 or 510)
- Very low VOC content in compliance with:
 - EU directive 2010/79/EU
 - French decree No: 2011-321

Pack Size

- 1 US Quart - (0.85 kg)
- 1 US Gallon - (3.4 kg)

Recommended Uses

Internal applications, Baca® can be only applied in exterior conditions when top coated with Oxibond® 4005 Flat/Satin or Gloss.

Type of Substrate

Plaster, embossed wall coverings, gypsum board, concrete, cement rendering, brick work & block work.

Finish

Satin Metallic finish.

Coverage

6-7 m² per kg.

Drying Time

15 minutes to 1 hour depending on temperature and humidity.

Thinner

No thinning required.

Preparation

All surfaces to be painted should be clean, dry and free from loose & flaking material. Rub down & rinse. Prime the substrate with the appropriate COLORTEK® CO. ACRYL or C1A base.

CODING SYSTEM

Color reference Color name

510/23 - Dike

Base 129-2

Background color/



Instructions

Stir well - Baca® is applied with a roller in three coats - Before the final coat dries exert a slight circular movement pressure using a trowel or spatula in continuous motion to reach the desired aesthetic effect.

Do not apply at temperatures below 5°C or when rain is expected.

Recommendation

Achieving the correct lighting is critical to the success of Baca® walls. To get the best results it is important to light the surface to achieve the optimum pearl sparkle.

Cleaning

Remove as much product as possible from application equipment before cleaning. Clean equipment immediately after use with warm soapy water & rinse thoroughly.

Do not empty product into drains or watercourses.

Additional Info

Product batches are tested using a quality control system and are ISO 9001:2008 certified

Transportation & Storage

Care should be taken to avoid spillage. Protect from frost & humidity.



FR

Baca®

Baca® est une peinture décorative acrylique aux nuances réfléchissantes et changeantes. Sa gamme de 73 teintes vous aidera à créer une harmonie parfaite de couleurs.

Nom Technique

Effet satiné lumineux.

Propriétés

- Ne contient pas de plomb
- Produit en base eau
- Lavable
- Inodore
- 6 bases (500, 506, 507, 508, 509 or 510)
- Faible teneur en COV conformément aux:
 - Directive EU directive 2010/79/EU
 - Decret Français No: 2011-321

Emballage

- 1 US Quart - (0.85 kg)
- 1 US Gallon - (3.4 kg)

SYSTÈME DE CODAGE

Référence couleur Nom de la couleur

510/23 - Dike

Base 129-2

Couleur de fond/



Usage Recommandé

Application en intérieur, Baca® peut être uniquement appliqué en extérieur lorsqu'il est recouvert avec la couche de protection Oxibond® 4005 Matt/Satiné ou Gloss.

Types de Support

Enduit, ciment, plâtre et plaque de plâtre, anciennes peintures usuelles absorbantes, etc.

Finition

Finition satinée métallique.

Rendement

6-7 m² par kg.

Temps de Séchage

Environ 15 à 60 minutes en fonction des conditions climatiques et de la température ambiante.

Diluant

Aucune dilution requise.

Préparation du Support

Le support doit être dur, propre, sain, sec, cohésif et libre de toute matière telle que salpêtre, mousse, lichen ou autres microorganismes pouvant empêcher l'adhérence du produit sur le support. Dans un premier temps, appliquer la couleur appropriée de la sous-couche COLORTEK® CO.ACRYL ou C1A.

Application

Baca® est appliqué à l'aide d'un rouleau en 3 couches. Laisser sécher la surface avant d'appliquer la couche suivante. Pour obtenir l'effet décorative désiré, exercez à l'aide d'une spatule un mouvement circulaire continue avant que la dernière couche ne sèche.

Ne pas appliquer à une température ambiante inférieure à 5°C ou par temps pluvieux.

Recommandation

Il est recommandé d'installer un système d'illumination approprié afin de mettre en valeur l'effet satiné métallique de Baca®.

Nettoyage des Outils

Éliminer autant que possible le reste du produit de la surface des outils. Nettoyer ces derniers en les frottant vigoureusement avec de l'eau et du savon.

Ne pas vider les restes du produit dans égouts ou les voies d'eau.

Information Additionnelle

Le processus de fabrication de Baca® est soumis au plus stricts contrôles de qualité certifiés conformes au standard ISO 9001:2008.

Transport et Stockage

Stocker le produit à l'abri de l'humidité et des températures de gel.



5 283012 912812



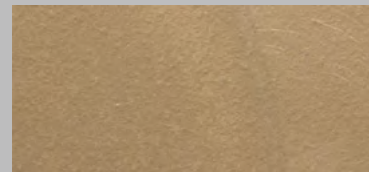
Product designed in the EU

www.colortek.eu

info@colortek.eu

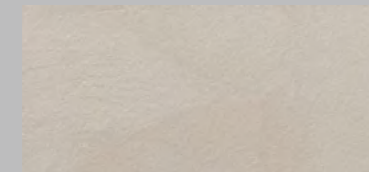


Synergy, Added Value, Continuous Improvement,
Diversity, Integrity, Social Responsibility.



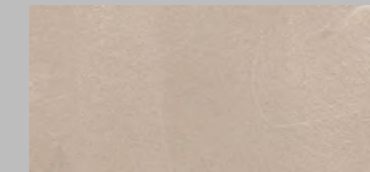
510/01 - Bia

Base 128-7



500/00 - Jupiter

Base White



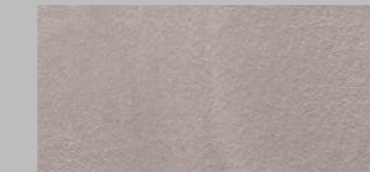
500/38 - Arke

Base 8-1



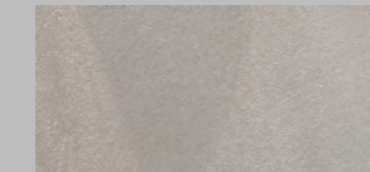
500/54 - Horne

Base 39-3



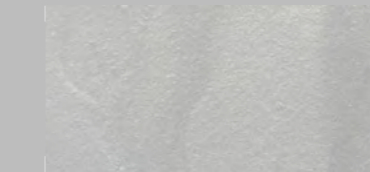
500/65 - Lethe

Base 39-3



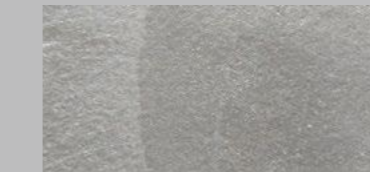
500/74 - Ersä

Base 150-1



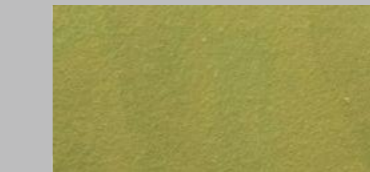
500/82 - Attis

Base 146-1



500/90 - Aceso

Base 148-7



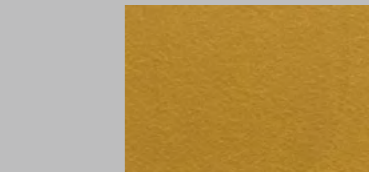
509/97 - Scylla

Base 134-6



509/103 - Ceranon

Base R17



509/109 - Clio

Base R17



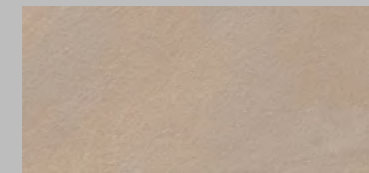
510/00 - Pallas

Base 94-7



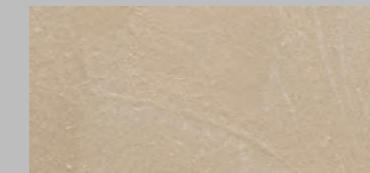
510/02 - Dolos

Base 128-7



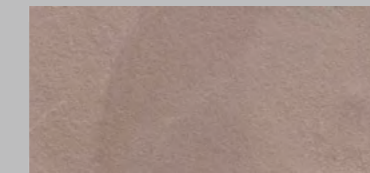
500/16 - Minos

Base 35-2



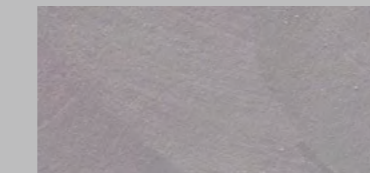
500/43 - Sema

Base 8-1



500/56 - Geras

Base 39-3



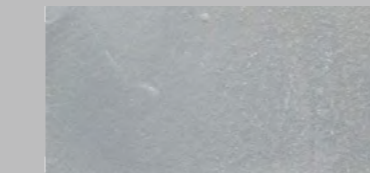
500/67 - Mania

Base 39-5



500/75 - Ladon

Base 124-2



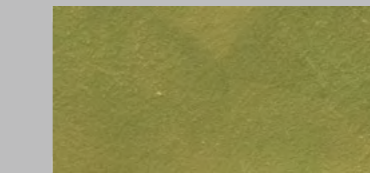
500/84 - Karpo

Base 146-1



500/92 - Epione

Base 146-6



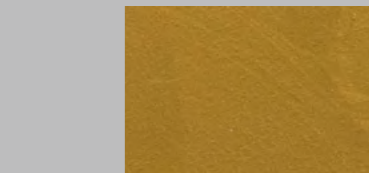
509/98 - Proteus

Base 134-6



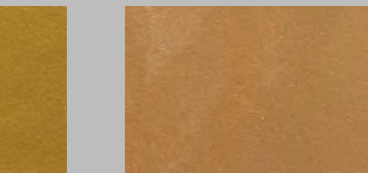
509/104 - Circe

Base R17



509/110 - Erato

Base R17



510/113 - Nete

Base 94-7



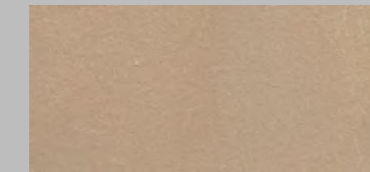
510/04 - Ate

Base 128-7



500/22 - Mormo

Base 51-7



500/45 - Ceto

Base 124-1



500/58 - Gelos

Base 119-2



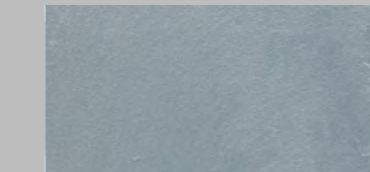
500/68 - Lyssa

Base 118-1



500/76 - Aetna

Base 124-2



500/85 - Cabeiri

Base 146-2



500/93 - Anius

Base 146-6



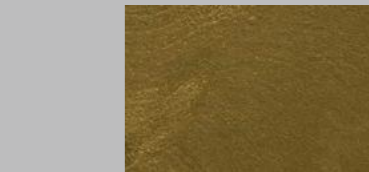
509/99 - Horae

Base 134-6



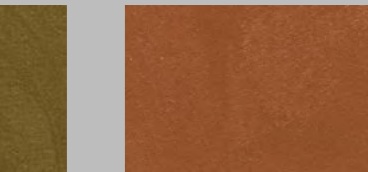
509/105 - Cres

Base R17



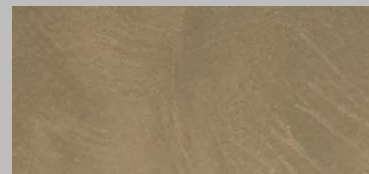
509/111 - Niobe

Base R17



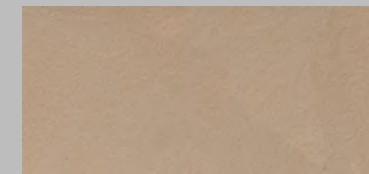
507/114 - Iro

Base R94



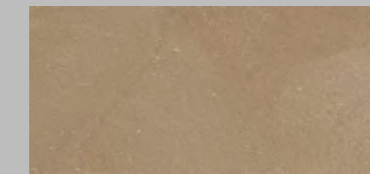
510/23 - Dike

Base 129-2



500/24 - Styx

Base 33-2



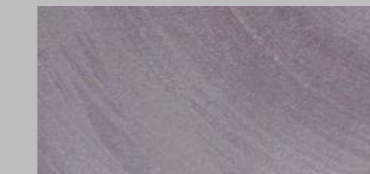
500/47 - Nyx

Base 37-3



500/61 - Eris

Base 119-2



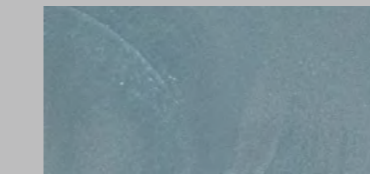
500/70 - Moros

Base 118-1



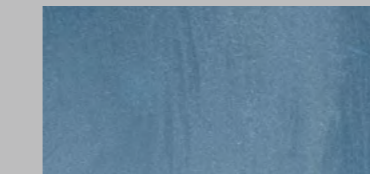
500/78 - Auxo

Base 148-6



500/86 - Methe

Base 145-6



500/94 - Carya

Base 113-6



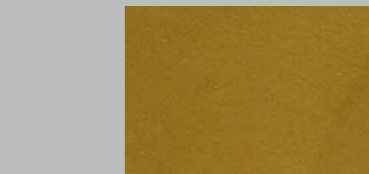
509/100 - Metope

Base 134-3



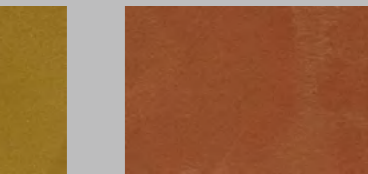
509/106 - Enyo

Base R17



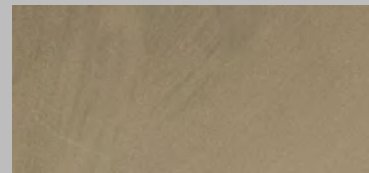
509/112 - Myles

Base R17



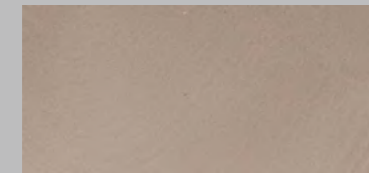
507/115 - Medea

Base R94



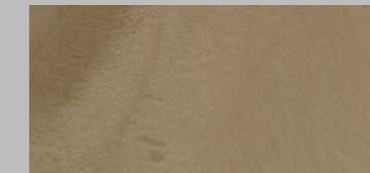
510/05 - Notus

Base 126-3



500/30 - Brizo

Base 33-2



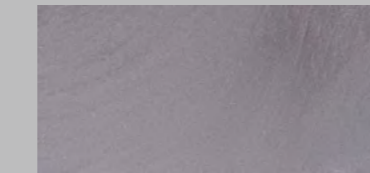
500/50 - Poros

Base 37-3



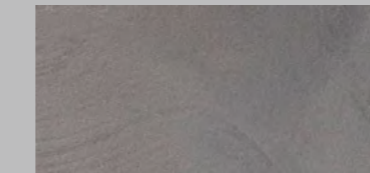
500/62 - Elpis

Base 119-2



500/72 - PHEME

Base 118-1



500/79 - Meliae

Base 148-5



500/87 - Potamoi

Base 145-3



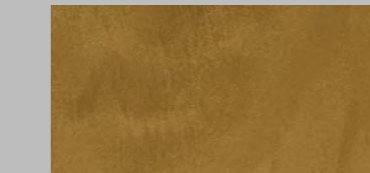
500/95 - Mopsus

Base 75-3



509/101 - Triton

Base 134-3



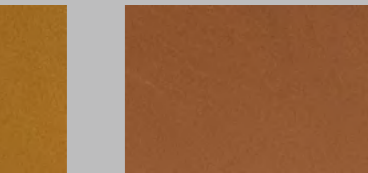
509/107 - Aoide

Base R17



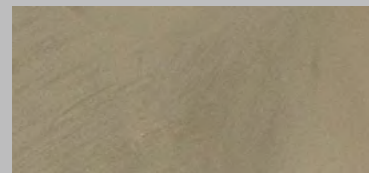
509/00 - Artemis

Base R17



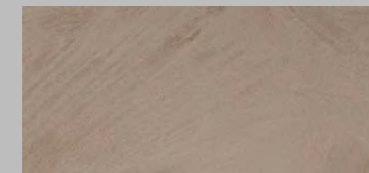
507/00 - Peseidor

Base R94



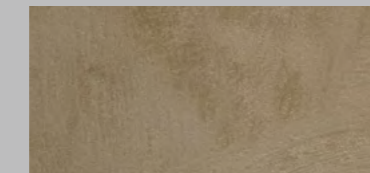
510/06 - Zelos

Base 126-3



500/32 - Aeolus

Base 37-4



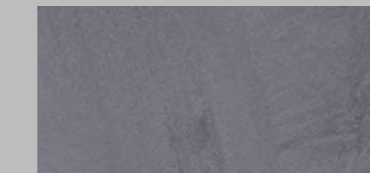
500/52 - Oizys

Base 126-7



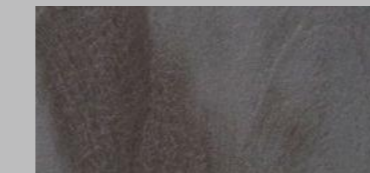
500/64 - Loke

Base 119-3



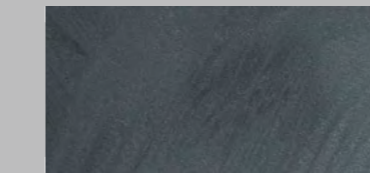
500/73 - Soter

Base 118-3



500/81 - Echo

Base 148-5



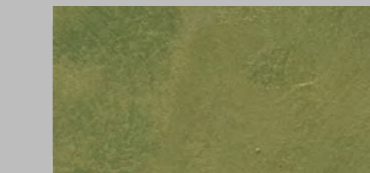
500/89 - Carme

Base 170-3



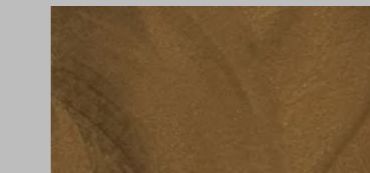
500/96 - Hydros

Base 75-4



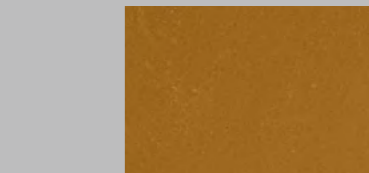
509/102 - Aurai

Base 134-4



509/108 - Helen

Base R17



508/00 - Aphrodite

Base R17



506/00 - Hermes

Base R94