

BREEZE BLOCKS[®]

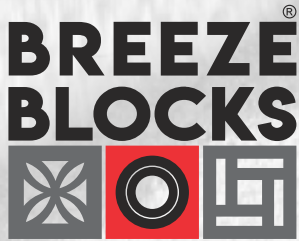


Love at first sight

JANUARY 2022

Powered by





Love at first sight

Breeze Blocks Are the Best New Thing to Happen to Exteriors & Interiors!

Breeze Blocks adds a decorative dimension to architecture, as well as providing privacy and protection but with a feeling of openness and weightlessness.

Thanks to skilful artisans plus the creation from modern designers and architects. Breeze Blocks are handmade from White Sand & Cement. These Blocks have been leveraged to be the unique artworks in its popular applications such as Ventilation

Facade walls, Partitions, Fences, Indoor and Outdoor elevation.



DESIGN
FLEXIBILITY



100%
ASBESTOS FREE



ALL WEATHER
RESISTANT



FIRE
RESISTANT



TERMITE
FREE



FUNGUS
FREE



COST &
TIME SAVING

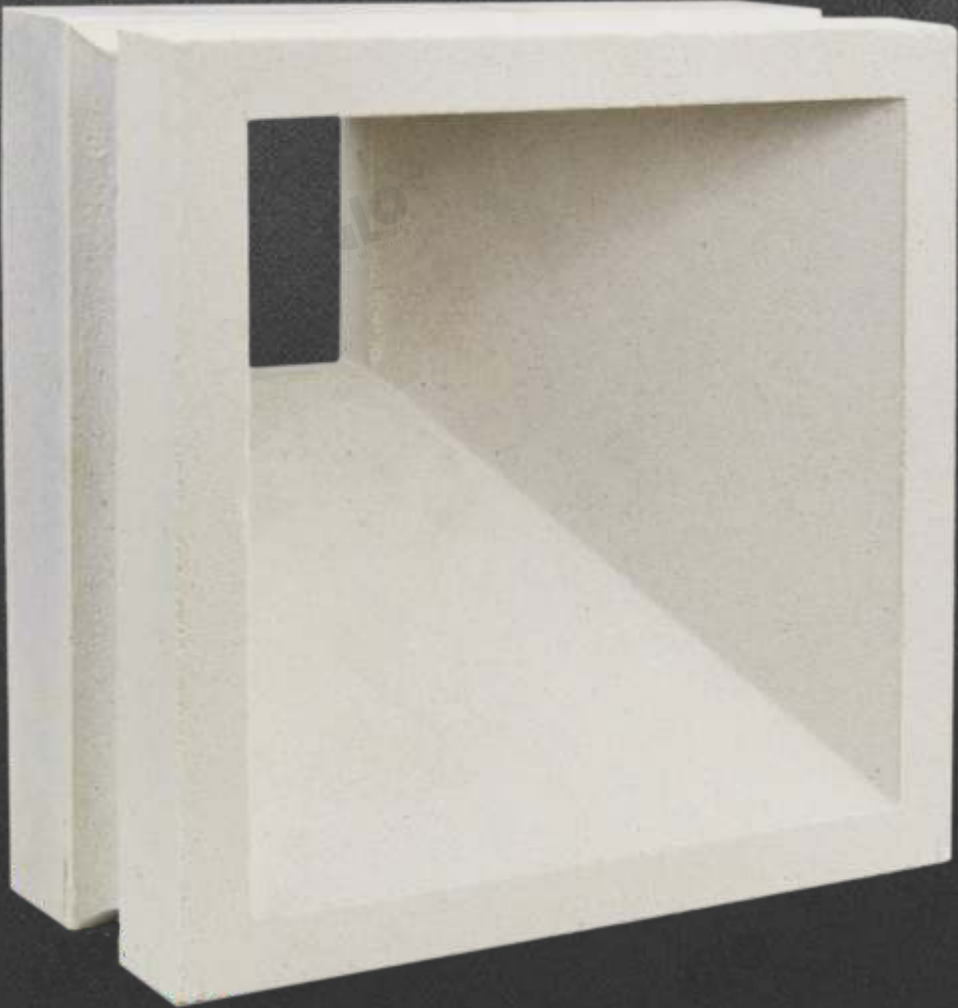


Love at first sight

Powered by



MODEL:  **ALASKA**
PREMIUM



Size	Per Box Qty.	Weight
190mm x 190mm x 80mm	4 Pcs	3.6 Kgs P/Pcs.

GLO

GLO



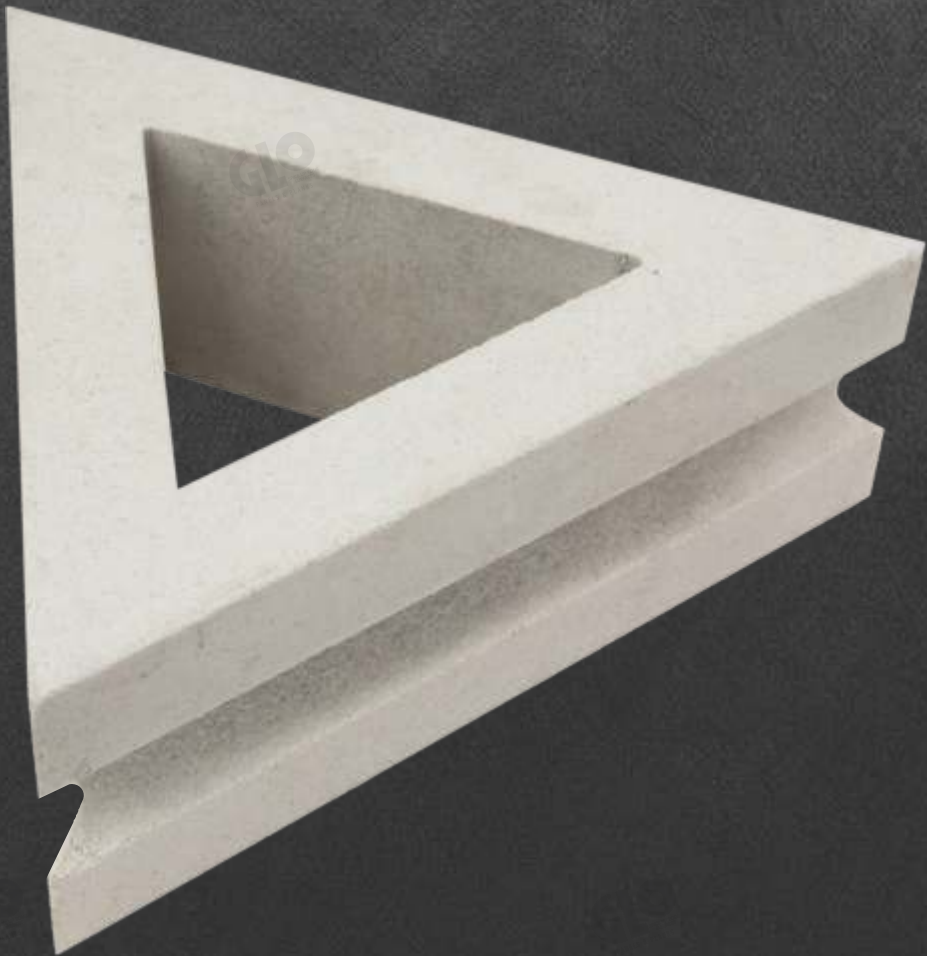
MODEL:  **PYRAMID
PREMIUM**



Size	Per Box Qty.	Weight
240mm x 200mm x 80mm	2 Pcs	2.8 Kgs P/Pcs.

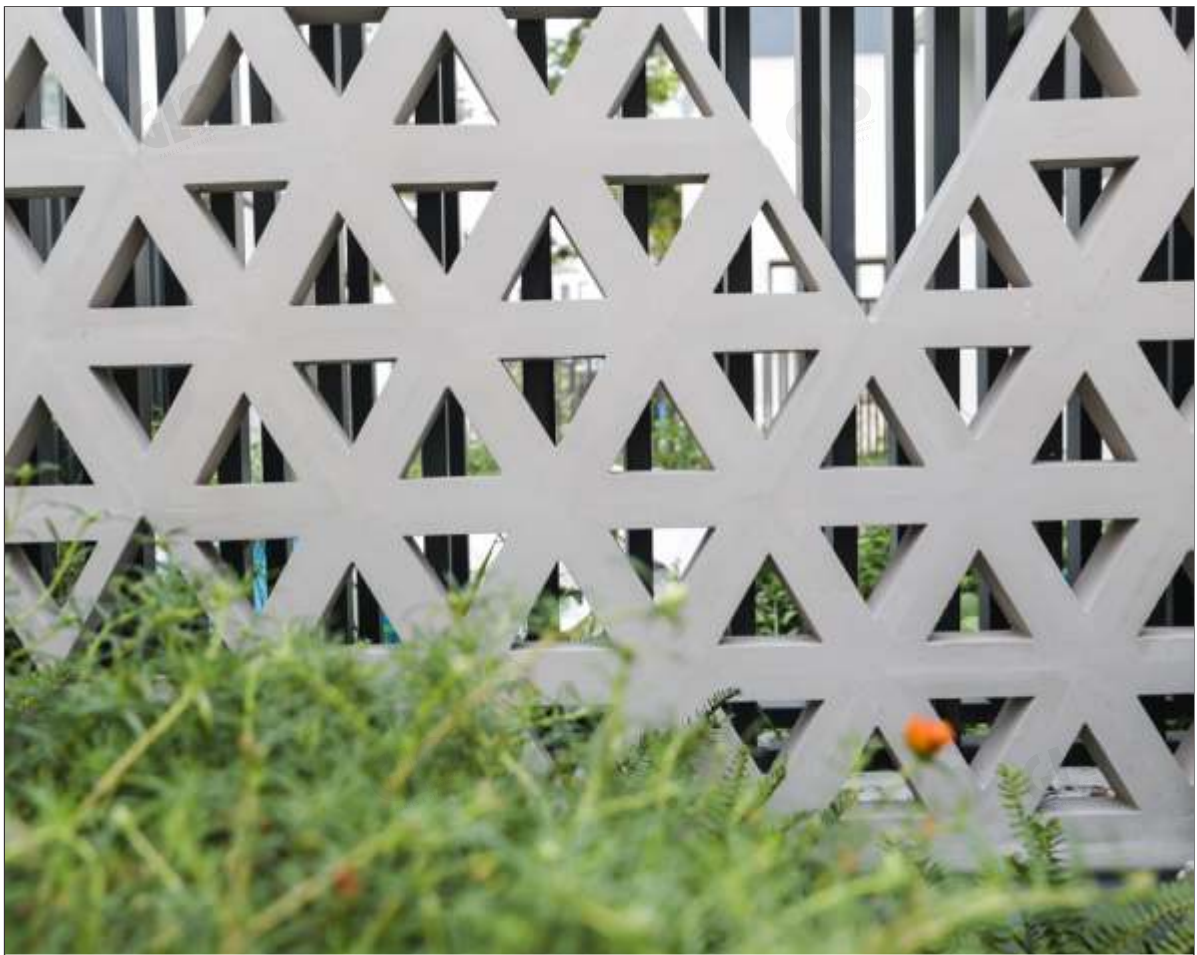


MODEL:  TRIANGLE

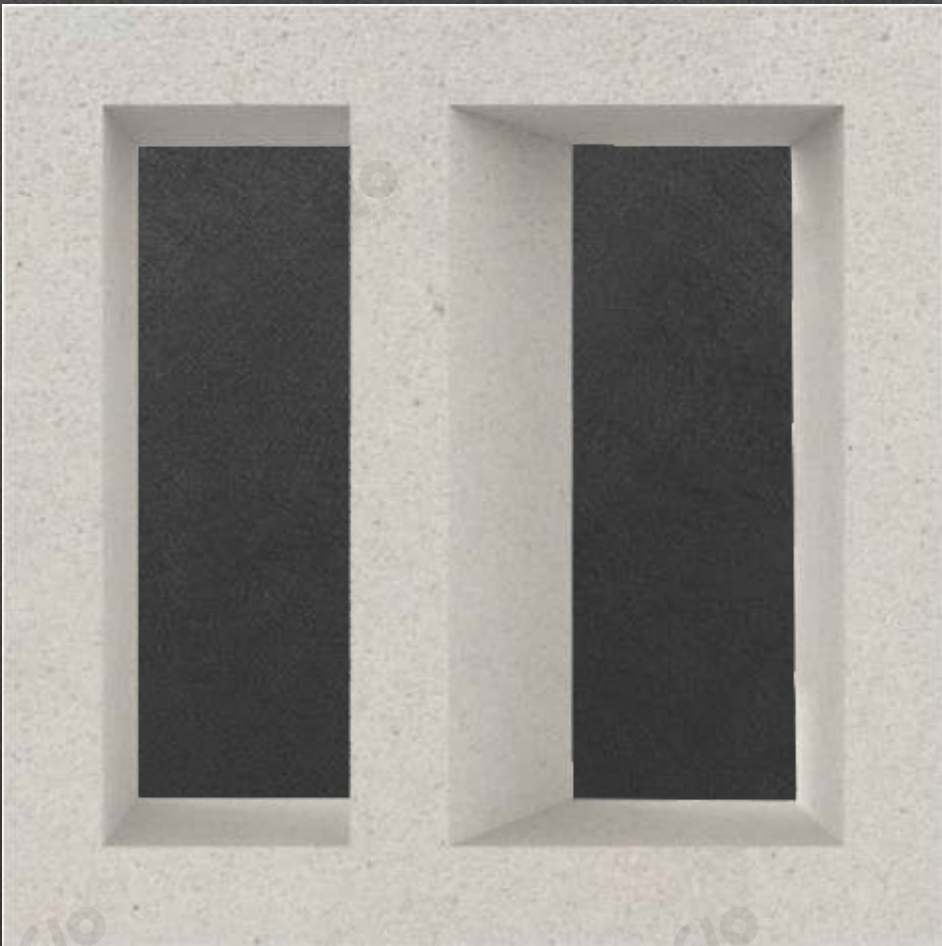


Size	Per Box Qty.	Weight
190mm x 190mm x 190mm x 65mm	8 Pcs	1.5 Kgs P/Pcs.

Powered by



MODEL:  LIGHT



Size	Per Box Qty.	Weight
190mm x 190mm x 65mm	4 Pcs	2.1 Kgs P/Pcs.

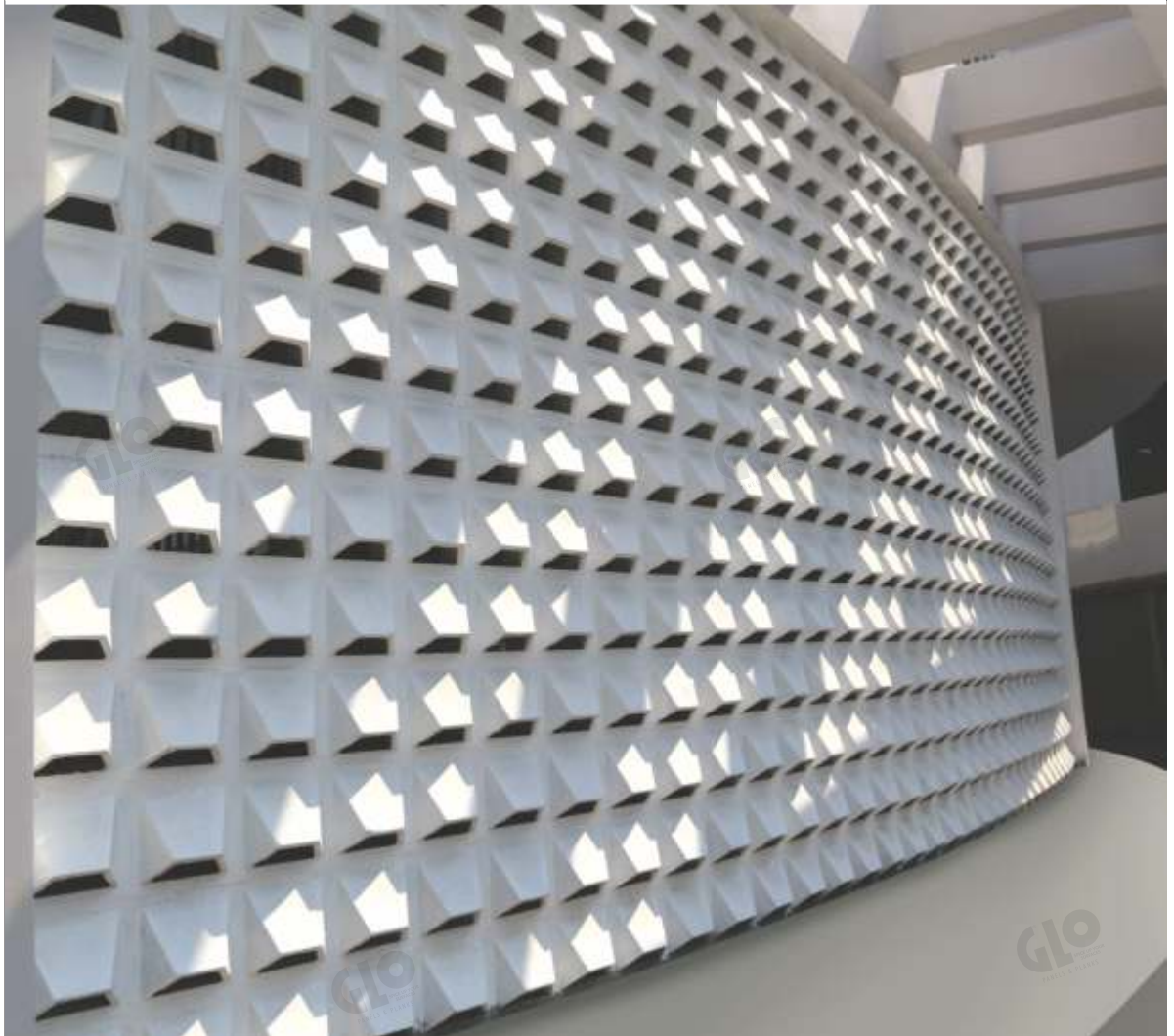


MODEL:  MOUNTAIN



Size	Per Box Qty.	Weight
190mm x 190mm x 65mm	3 Pcs	2.6 Kgs P/Pcs.

Powered by



MODEL:  FLOWER



Size	Per Box Qty.	Weight
190mm x 190mm x 65mm	4 Pcs	2.9 Kgs P/Pcs.

Powered by



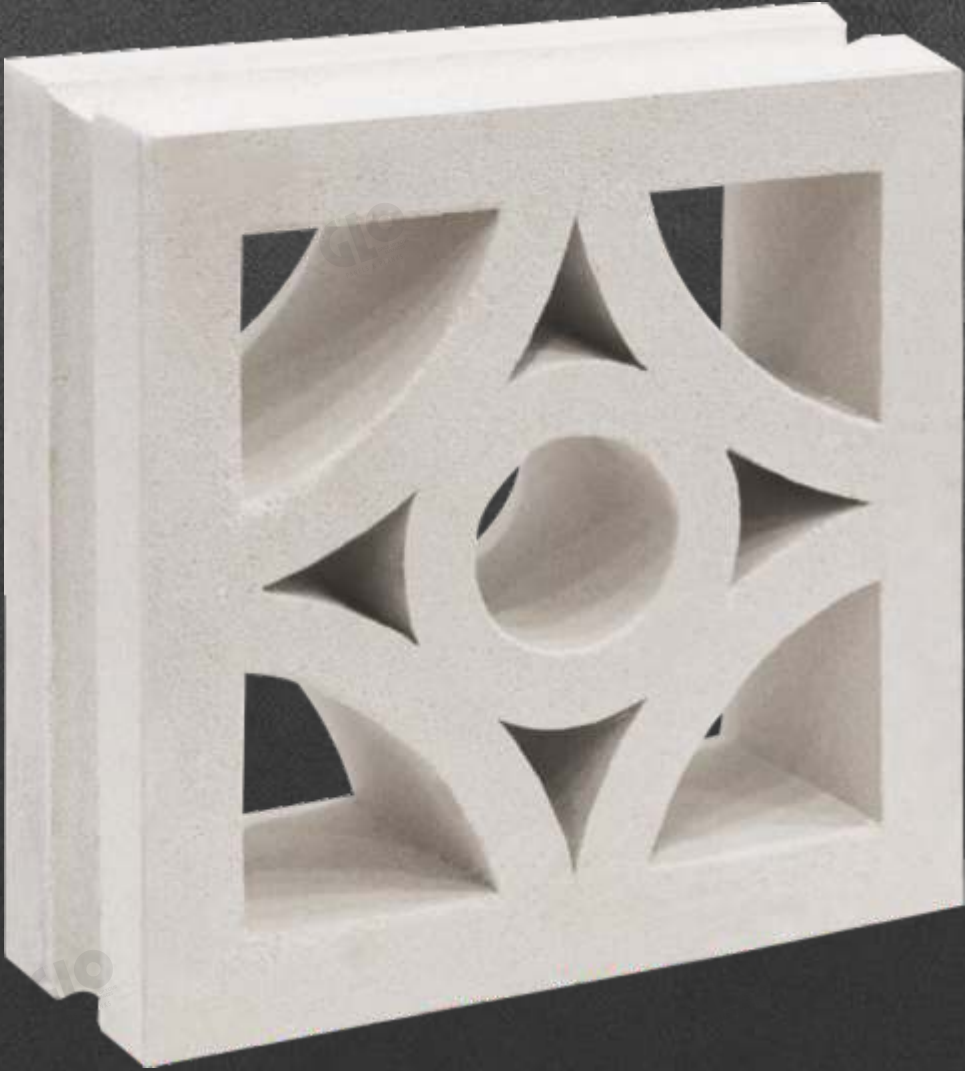
MODEL:  LEAF



Size	Per Box Qty.	Weight
190mm x 190mm x 65mm	4 Pcs	2.8 Kgs P/Pcs.



MODEL:  TALY

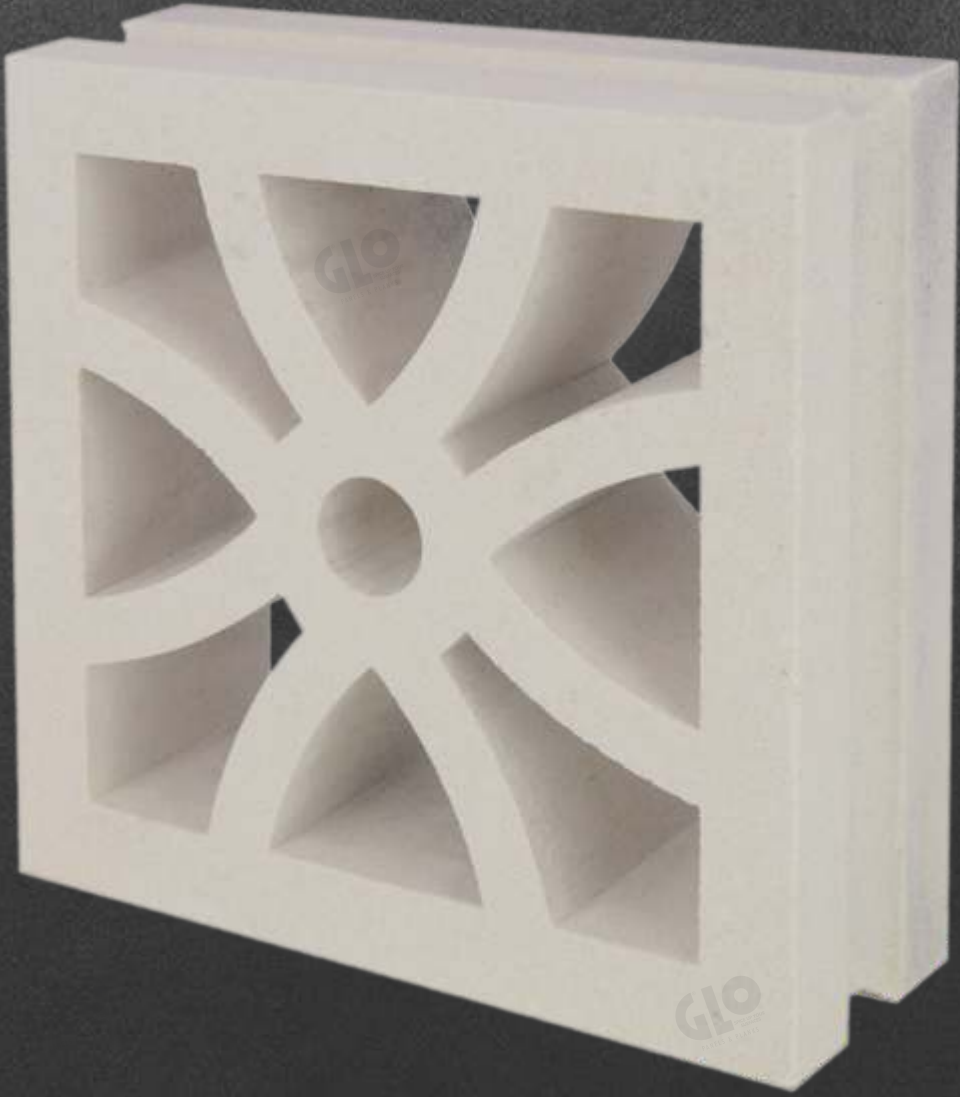


Size	Per Box Qty.	Weight
190mm x 190mm x 65mm	4 Pcs	2.6 Kgs P/Pcs.

Powered by



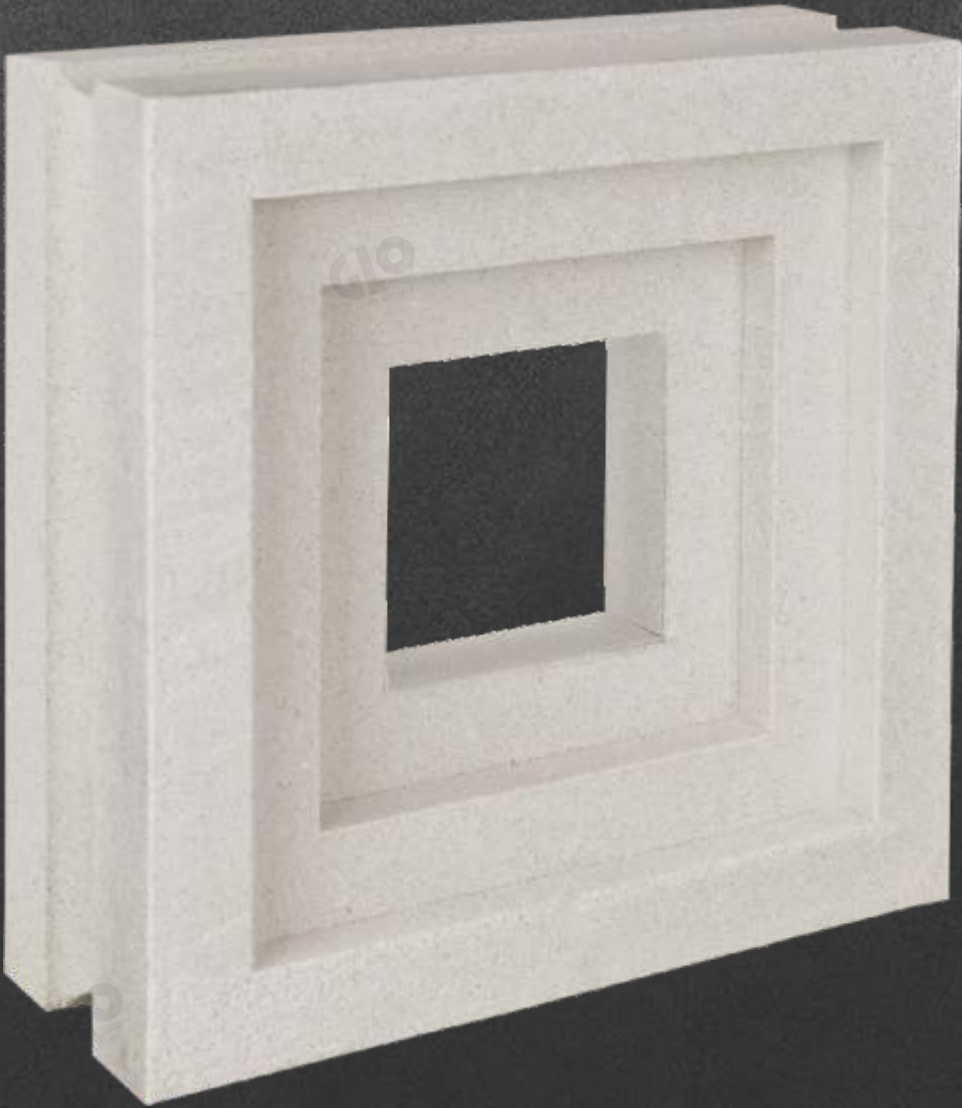
MODEL:  FLORAL



Size	Per Box Qty.	Weight
190mm x 190mm x 65mm	4 Pcs	2.6 Kgs P/Pcs.



MODEL:  FIELD 1



Size	Per Box Qty.	Weight
190mm x 190mm x 65mm	4 Pcs	3 Kgs P/Pcs.

Powered by

GLO
HOMES & PLACES

GLO
HOMES & PLACES



GLO
HOMES & PLACES

GLO
HOMES & PLACES



MODEL:  FIELD 2

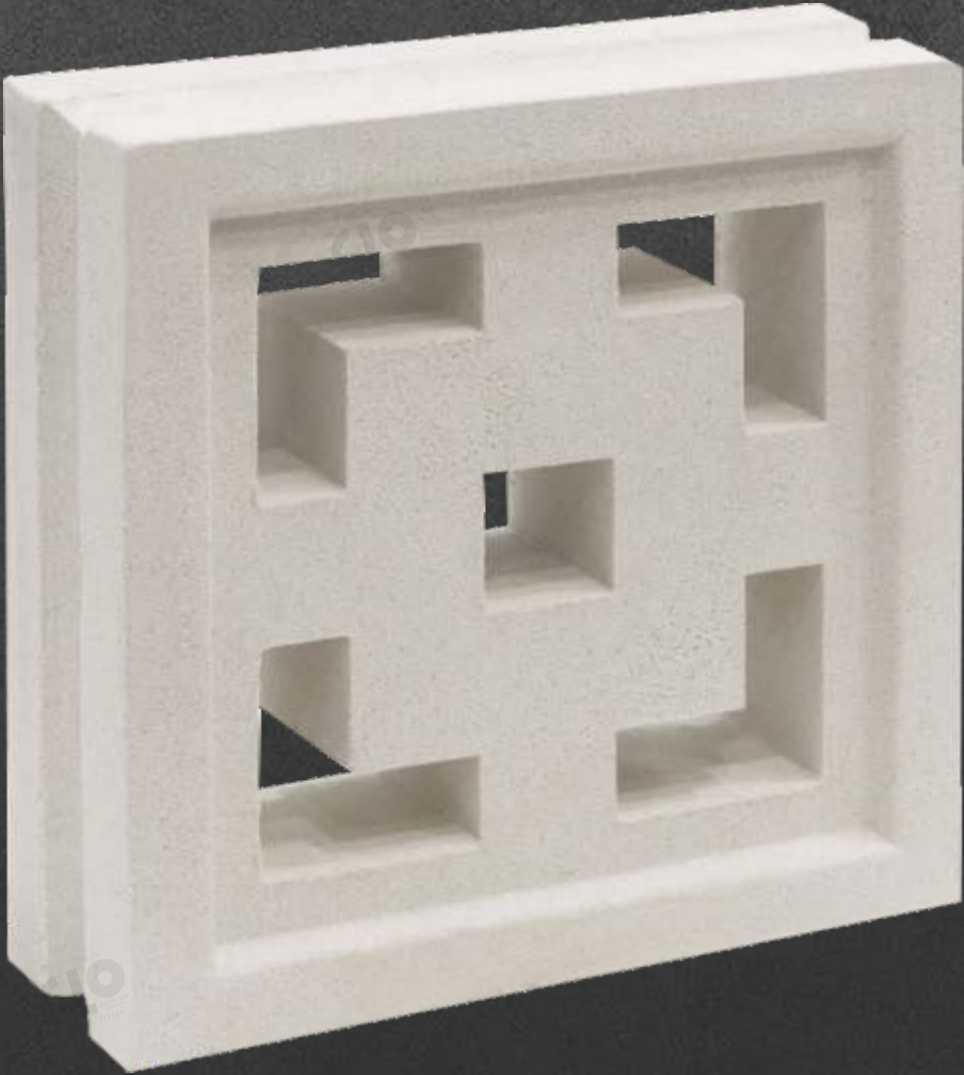


Size	Per Box Qty.	Weight
190mm x 190mm x 65mm	4 Pcs	2.9 Kgs P/Pcs.

Powered by



MODEL:  CUBE



Size	Per Box Qty.	Weight
190mm x 190mm x 65mm	4 Pcs	2.9 Kgs P/Pcs.



MODEL:  MAZE

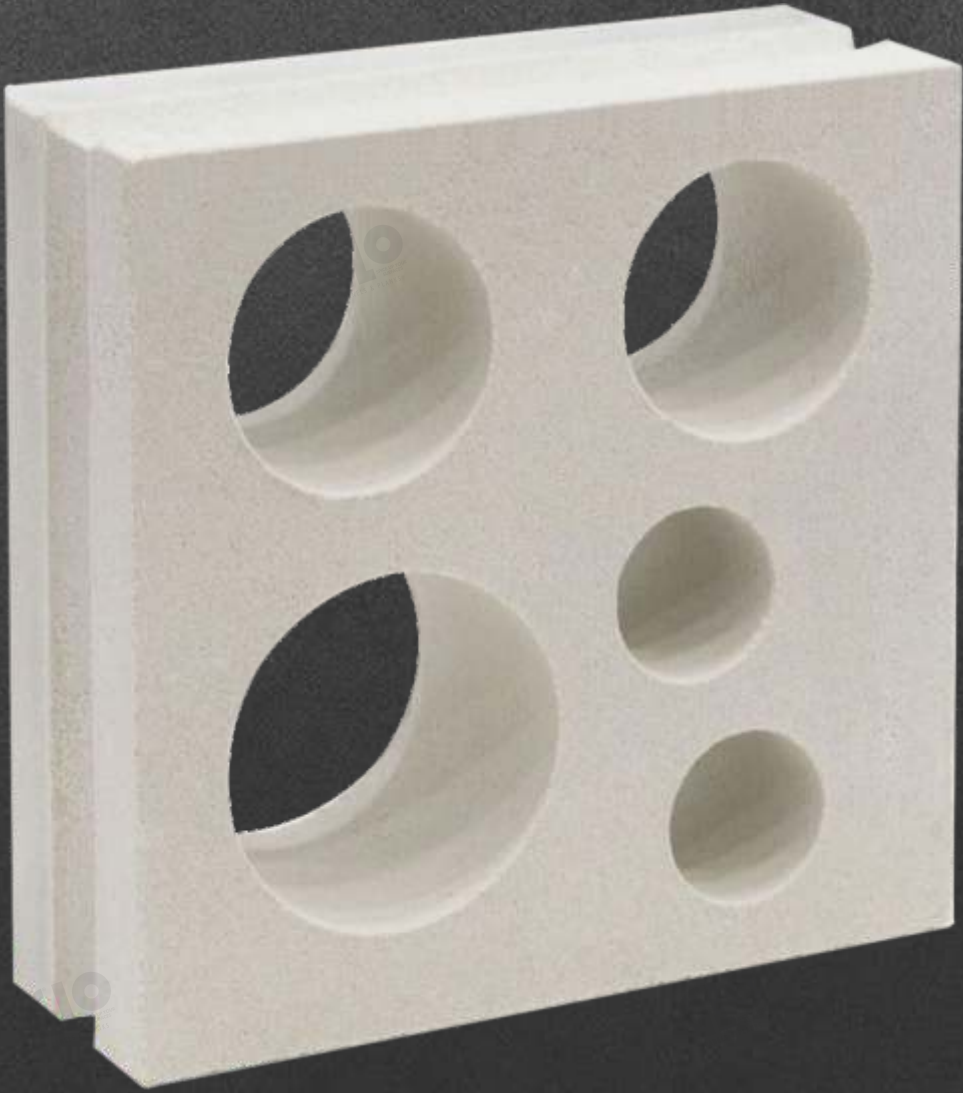


Size	Per Box Qty.	Weight
190mm x 190mm x 65mm	4 Pcs	2.8 Kgs P/Pcs.

Powered by



MODEL:  **SEAFOAM**

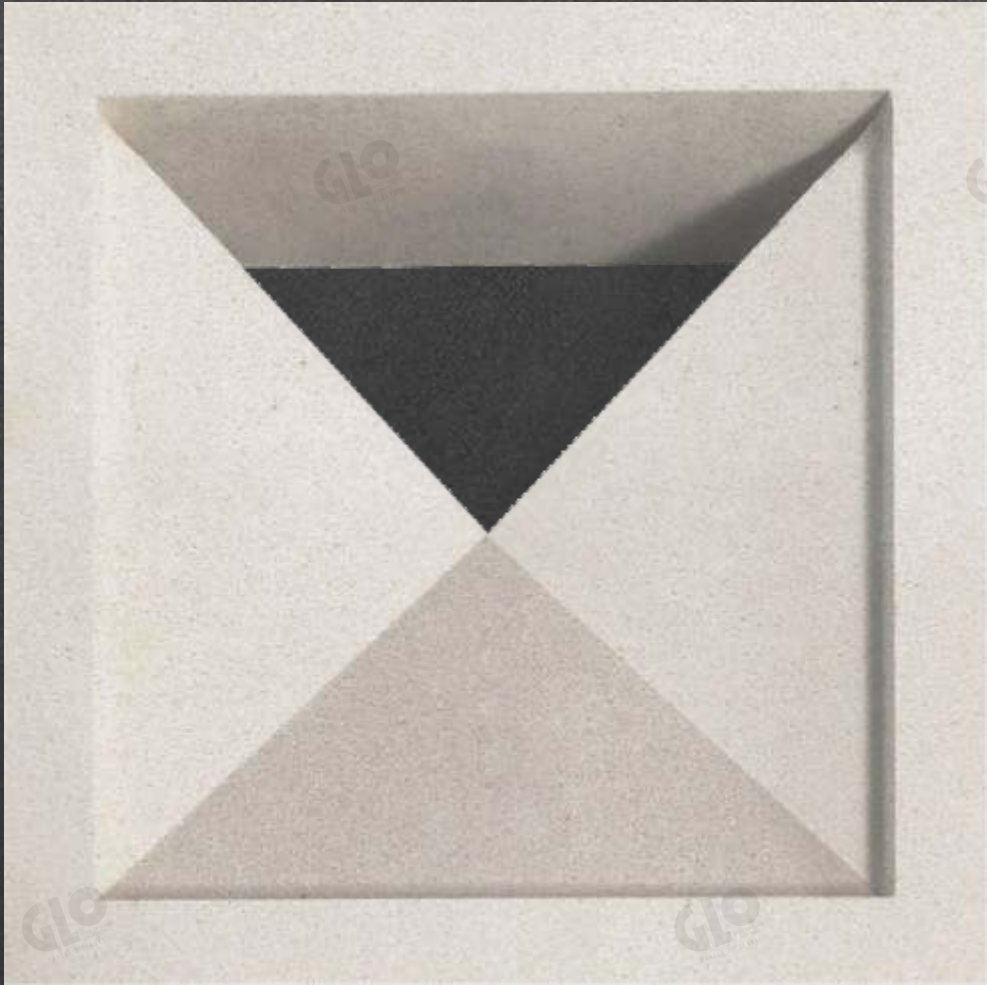


Size	Per Box Qty.	Weight
190mm x 190mm x 65mm	4 Pcs	2.9 Kgs P/Pcs.



MODEL:  GIZA 2

PREMIUM



Size	Per Box Qty.	Weight
290mm x 290mm x 90mm	2 Pcs	11.00 Kgs P/Pcs.

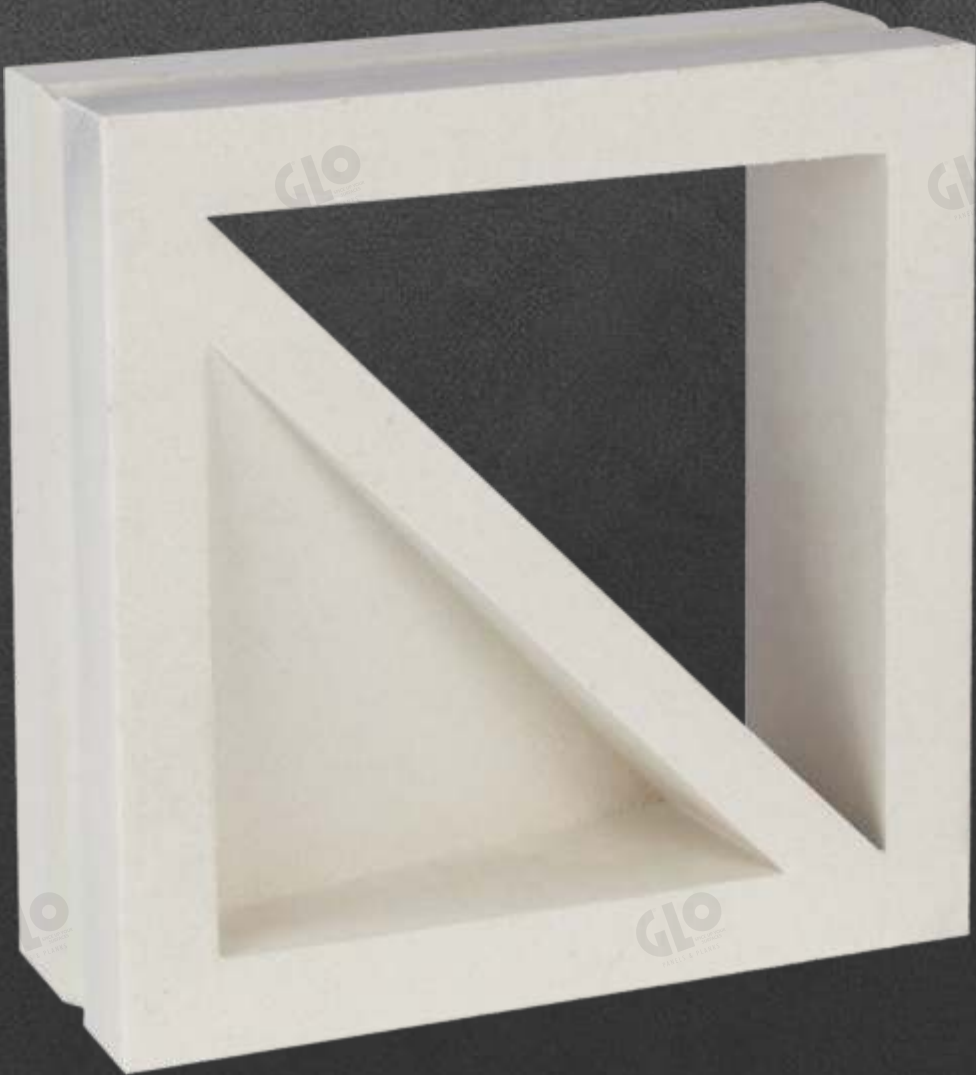
Powered by

GLO

GLO



MODEL:  **CONNECT**

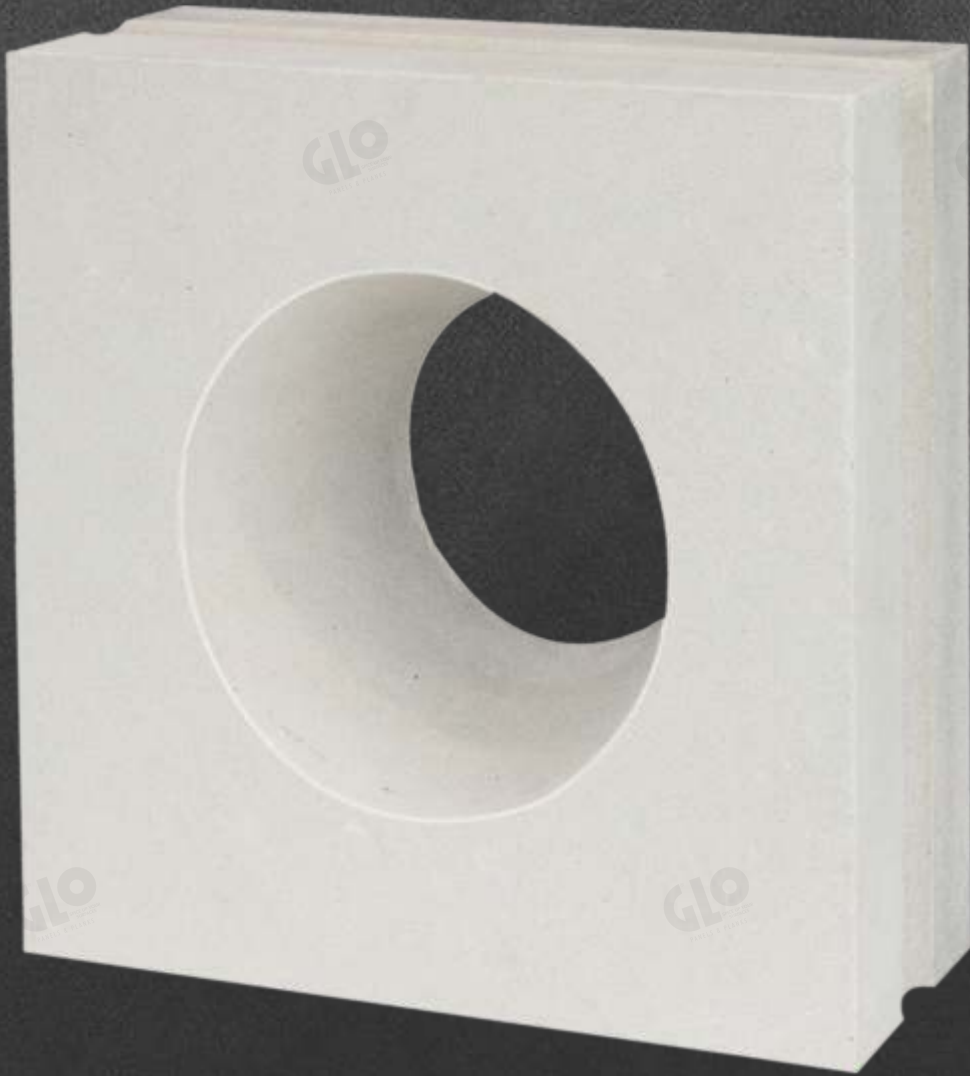


Size	Per Box Qty.	Weight
290mm x 290mm x 90mm	2 Pcs	7.5 Kgs P/Pcs.

Powered by



MODEL:  CONES

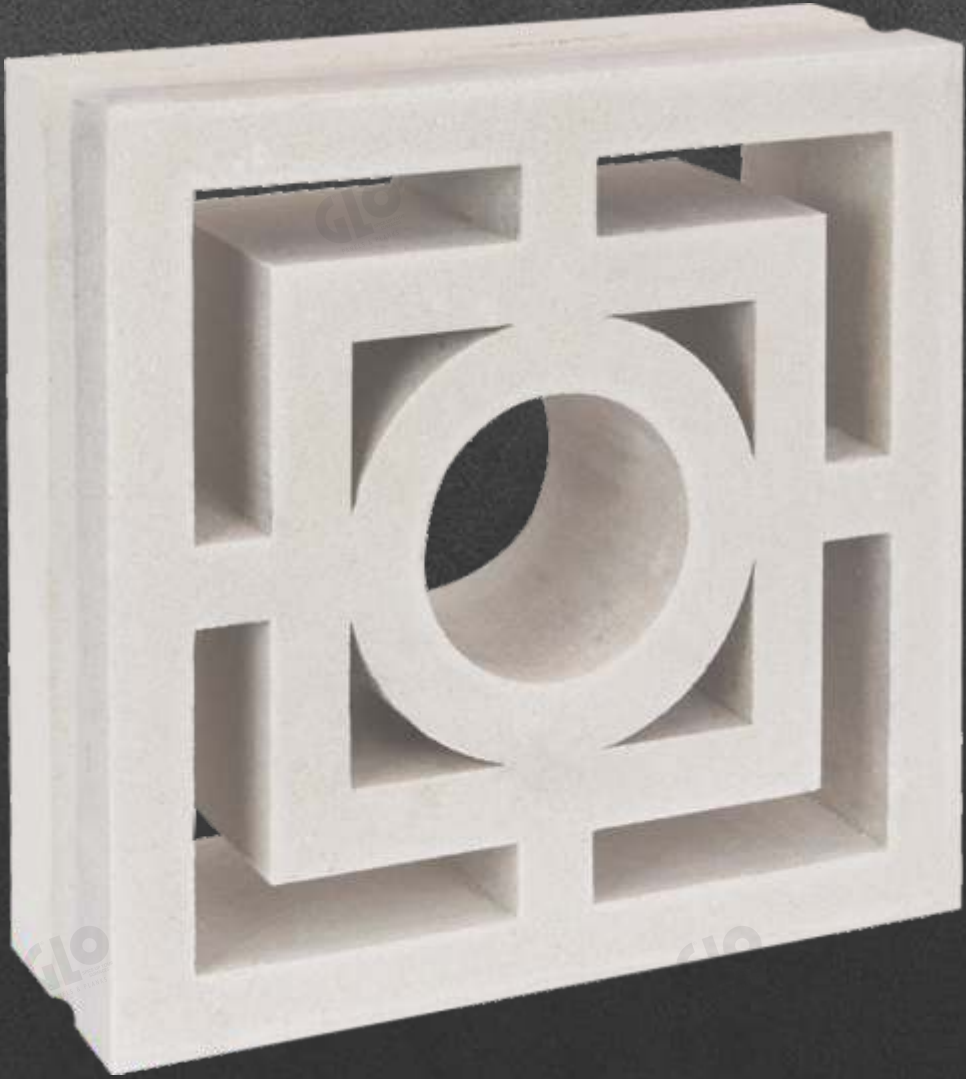


Size	Per Box Qty.	Weight
290mm x 290mm x 90mm	2 Pcs	11.00 Kgs P/Pcs.

Powered by



MODEL:  **SUNSTORY**



Size	Per Box Qty.	Weight
290mm x 290mm x 90mm	2 Pcs	8.8 Kgs P/Pcs.

Powered by

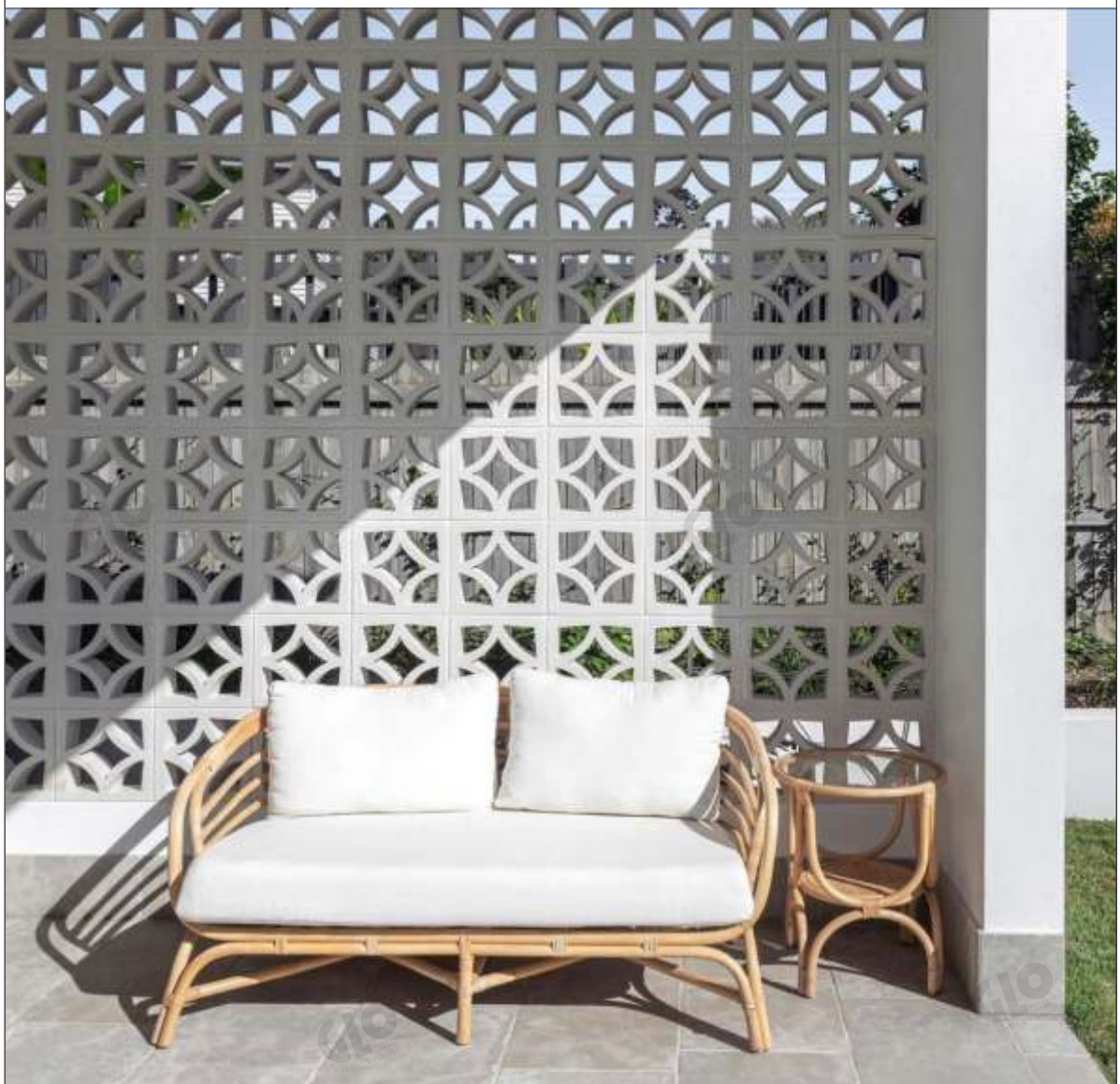


MODEL:  STARS

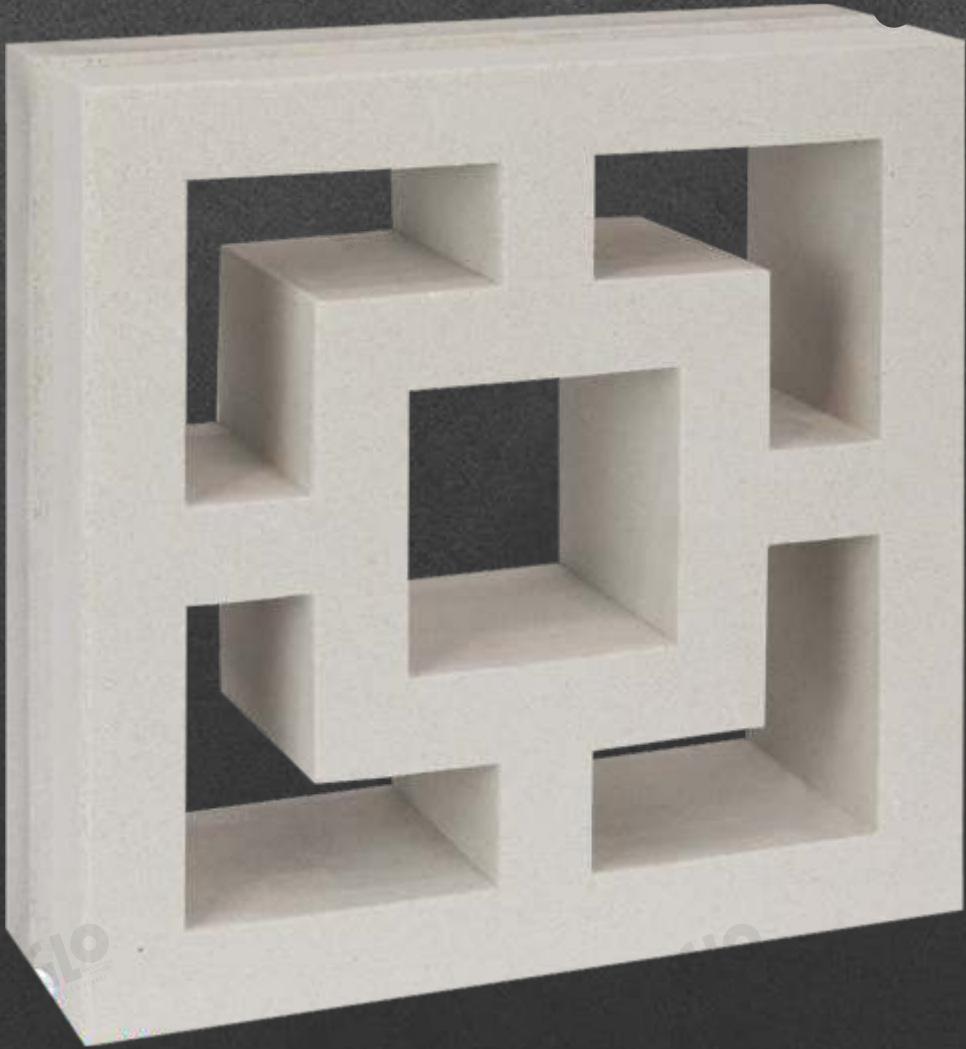


Size	Per Box Qty.	Weight
290mm x 290mm x 90mm	2 Pcs	7.4 Kgs P/Pcs.

Powered by



MODEL:  SQUARES



Size	Per Box Qty.	Weight
290mm x 290mm x 90mm	2 Pcs	8.7 Kgs P/Pcs.

Powered by



INSTALLATION

1. Preparing the installation site:

- Do not install the breeze block on the smooth and fragile bases such as ceramics, mosaic, tiles.

2. Preparing the mortar mixture:

- Option 1: Using the normal mortar mixture which is the same to install other building materials like bricks, blocks. We recommend using the white cement for the mortar.
- Option 2: Using the special ready mix mortar or cement adhesive for wall and following up the instruction of mortar manufacturer

Notes: The mortar mixture must be dry enough (not too wet), and choose the mortar grade on the request of the project.

3. Watering, curing the breeze cement blocks

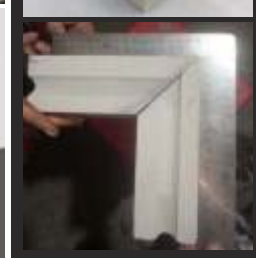
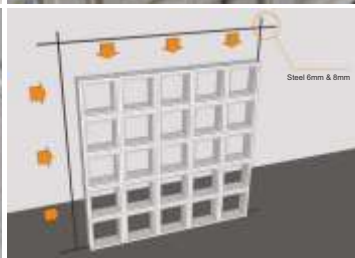
- Watering the breeze blocks before installation is important.
- Watering the finish wall after installation within 5 consecutive days (4 times per day).
- These steps are very important which effected directly to the wall quality later.

4. Preparing the installation space:

- Measuring the height and width of the estimated wall.
- Equally divided the distance of the blocks.
- Using the specialized tools to make sure the perpendicular of the wall on the ground surface.

5. Installation:

- Starting the first block from the bottom corner
- Applying the 10mm mortar layer on each top and side faces of the block and lay they fix into the correct positions.
- Using the trowel to float the mortar joints. Getting all the redundant parts out to get the nice joint looking.
- The best joints are in between 5-10mm. It can be flexible changed but less than 20mm for the installation areas of over 2.5 meter height x 3 meter width
- Using the normal tile cutting machine (same as cutting machine for encaustic cement tile, ceramic tile) if needed.
- If the wall is over 2.5 meter height, it should be locked by the 3-5cm concrete beam.
- If the wall is over 4 meter width, it should be locked by the concrete or brick pillar
- The anchorages should be used for the installation of the big walls.
- Water based acrylic paint to used.



*This guidance gives you an introduction on how to install the small walls by breeze blocks. It made by our experience within Vietnam local market.

**Each area/country has different weather, installation standard, and specialized tool. Please check with your local experienced experts to get the suitable instruction on each specific project.